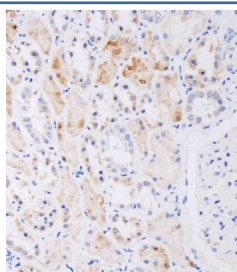


## NAT8L Antibody / N-acetyltransferase 8-like protein (F53840)

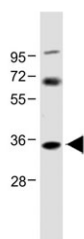
Catalog No.	Formulation	Size
F53840-0.2ML	In 1X PBS, pH 7.4, with 0.09% sodium azide	0.2 ml
F53840-0.05ML	In 1X PBS, pH 7.4, with 0.09% sodium azide	0.05 ml

[Bulk quote request](#)

<b>Availability</b>	1-3 business days
<b>Species Reactivity</b>	Human
<b>Predicted Reactivity</b>	Mouse
<b>Format</b>	Antigen affinity purified
<b>Host</b>	Rabbit
<b>Clonality</b>	Polyclonal (rabbit origin)
<b>Isotype</b>	Rabbit Ig
<b>Purity</b>	Antigen affinity
<b>UniProt</b>	Q8N9F0
<b>Applications</b>	Western Blot : 1:1000 Immunohistochemistry (FFPE) : 1:250
<b>Limitations</b>	This NAT8L antibody is available for research use only.



IHC staining of FFPE human kidney tissue with NAT8L antibody. HIER: boil tissue sections in pH 9 10mM Tris with 1mM EDTA for 20 min and allow to cool before testing.



Western blot testing of human U-87 MG cell lysate with NAT8L antibody at 1:1000. Predicted molecular weight: ~33 kDa but can be observed from 35~45 kDa.

## Description

N-acetyltransferase 8-like protein plays a role in the regulation of lipogenesis by producing N-acetylaspartate acid (NAA), a brain-specific metabolite. NAA occurs in high concentration in brain and its hydrolysis plays a significant part in the maintenance of intact white matter. Promotes dopamine uptake by regulating TNF-alpha expression. Attenuates methamphetamine-induced inhibition of dopamine uptake.

## Application Notes

Titration of the NAT8L antibody may be required due to differences in protocols and secondary/substrate sensitivity.

## Immunogen

A portion of amino acids 59-93 from the human protein was used as the immunogen for the NAT8L antibody.

## Storage

Aliquot the NAT8L antibody and store frozen at -20oC or colder. Avoid repeated freeze-thaw cycles.