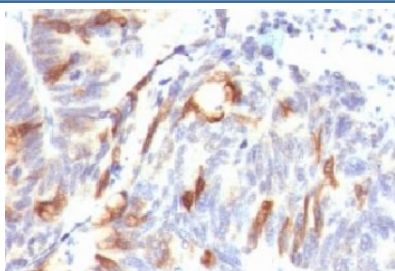


Mucin-2 Antibody [clone SPM513] (V9050)

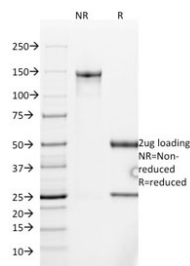
Catalog No.	Formulation	Size
V9050-100UG	0.2 mg/ml in 1X PBS with 0.1 mg/ml BSA (US sourced) and 0.05% sodium azide	100 ug
V9050-20UG	0.2 mg/ml in 1X PBS with 0.1 mg/ml BSA (US sourced) and 0.05% sodium azide	20 ug
V9050SAF-100UG	1 mg/ml in 1X PBS; BSA free, sodium azide free	100 ug
V9050IHC-7ML	Prediluted in 1X PBS with 0.1 mg/ml BSA (US sourced) and 0.05% sodium azide; *For IHC use only*	7 ml

[Bulk quote request](#)

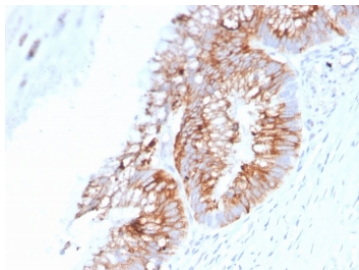
Availability	1-3 business days
Species Reactivity	Human
Format	Purified
Host	Mouse
Clonality	Monoclonal (mouse origin)
Isotype	Mouse IgG1, kappa
Clone Name	SPM513
Purity	Protein G affinity chromatography
UniProt	Q02817
Localization	Cytoplasmic and cell surface
Applications	Immunohistochemistry (FFPE) : 1-2ug/ml for 30 min at RT
Limitations	This Mucin-2 antibody is available for research use only.



IHC: Formalin-fixed, paraffin-embedded human colon carcinoma stained with Mucin-2 antibody (SPM513).



SDS-PAGE analysis of purified, BSA-free Mucin-2 antibody (clone SPM513) as confirmation of integrity and purity.



IHC: Formalin-fixed, paraffin-embedded human colon stained with Mucin-2 antibody (SPM513).

Description

Recognizes a single glycoprotein of 520kDa, identified as mucin 2 (MUC2). This mAb shows no cross-reaction with human milk fat globule membranes, MUC1, or MUC3. Its epitope has been defined as GTQTP (GlyThrGlnThrPro). Mucins are high molecular weight glycoproteins, which constitute the major component of the mucus layer that protects the gastric epithelium. MUC2 is specifically expressed in goblet cells of the small intestine & colon; in about 65% of colonic carcinomas and about 40% of gastric carcinomas. MUC2 is rarely expressed outside of the GI tract with the exceptions of mucinous carcinoma of breast and clear cell-type carcinomas of the ovary.

Application Notes

The optimal dilution of the Mucin-2 antibody for each application should be determined by the researcher.

1. Staining of formalin-fixed tissues requires boiling tissue sections in 10mM Tris with 1mM EDTA, pH 9.0, for 10-20 min followed by cooling at RT for 20 minutes.
2. The prediluted format is supplied in a dropper bottle and is optimized for use in IHC. After epitope retrieval step (if required), drip mAb solution onto the tissue section and incubate at RT for 30 min.

Immunogen

Amino acids KYPTTTPISTTTMTPTPTGTQTPTTT from the human protein were used as the immunogen for this Mucin-2 antibody.

Storage

Store the Mucin-2 antibody at 2-8°C (with azide) or aliquot and store at -20°C or colder (without azide).

