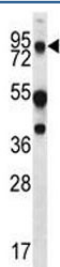


MUC20 Antibody (F40164)

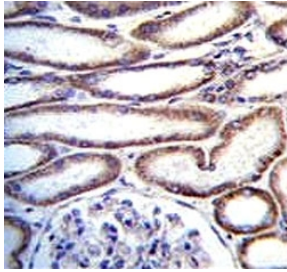
Catalog No.	Formulation	Size
F40164-0.4ML	In 1X PBS, pH 7.4, with 0.09% sodium azide	0.4 ml
F40164-0.08ML	In 1X PBS, pH 7.4, with 0.09% sodium azide	0.08 ml

[Bulk quote request](#)

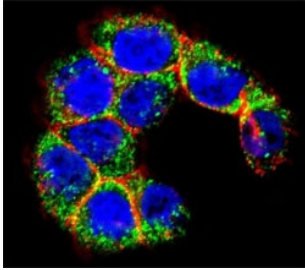
Availability	1-3 business days
Species Reactivity	Human
Format	Antigen affinity purified
Host	Rabbit
Clonality	Polyclonal (rabbit origin)
Isotype	Rabbit Ig
Purity	Antigen affinity
UniProt	Q8N307
Applications	Western Blot : 1:1000 IHC (Paraffin) : 1:10-1:50 Immunofluorescence : 1:10-1:50 Flow Cytometry : 1:10-1:50
Limitations	This MUC20 antibody is available for research use only.



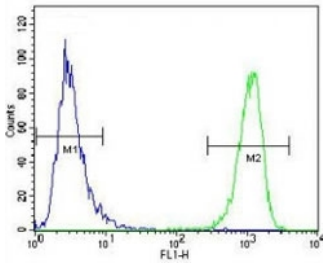
MUC20 antibody western blot analysis in WiDr lysate.



MUC20 antibody immunohistochemistry analysis in formalin fixed and paraffin embedded human kidney tissue.



Confocal immunofluorescent analysis of MUC20 antibody with WiDr cells followed by Alexa Fluor 488-conjugated goat anti-rabbit IgG (green). Actin filaments have been labeled with Alexa Fluor 555 Phalloidin (red). DAPI was used as a nuclear counterstain (blue).



MUC20 antibody flow cytometric analysis of WiDr cells (right histogram) compared to a negative control cell (left histogram). FITC-conjugated goat-anti-rabbit secondary Ab was used for the analysis.

Description

This gene encodes a member of the mucin protein family. Mucins are high molecular weight glycoproteins secreted by many epithelial tissues to form an insoluble mucous barrier. The shorter isoform expressed by this gene is localized to the plasma membrane, whereas the longer isoform might be secreted. The C terminus of this protein associates with the multifunctional docking site of the met proto-oncogene and suppresses activation of some downstream met signaling cascades. The protein features a tandem repeat domain that varies between 2 and 6 copies in different individuals. Multiple transcript variants encoding different isoforms have been found for this gene.

Application Notes

Titration of the MUC20 antibody may be required due to differences in protocols and secondary/substrate sensitivity.

Immunogen

A portion of amino acids 654-684 from the human protein was used as the immunogen for this MUC20 antibody.

Storage

Aliquot the MUC20 antibody and store frozen at -20oC or colder. Avoid repeated freeze-thaw cycles.

