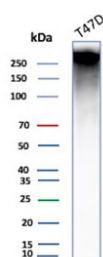


MUC1 Antibody [clone E29] (V3128)

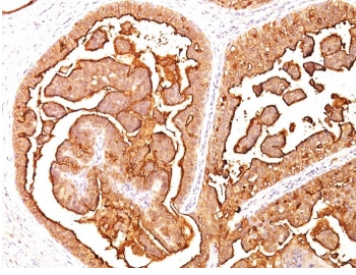
Catalog No.	Formulation	Size
V3128-100UG	0.2 mg/ml in 1X PBS with 0.1 mg/ml BSA (US sourced) and 0.05% sodium azide	100 ug
V3128-20UG	0.2 mg/ml in 1X PBS with 0.1 mg/ml BSA (US sourced) and 0.05% sodium azide	20 ug
V3128SAF-100UG	1 mg/ml in 1X PBS; BSA free, sodium azide free	100 ug
V3128IHC-7ML	Prediluted in 1X PBS with 0.1 mg/ml BSA (US sourced) and 0.05% sodium azide; *For IHC use only*	7 ml

[Bulk quote request](#)

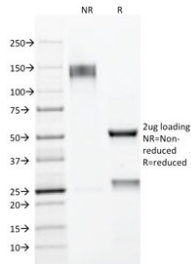
Availability	1-3 business days
Species Reactivity	Human
Format	Purified
Host	Mouse
Clonality	Monoclonal (mouse origin)
Isotype	Mouse IgG2a, lambda
Clone Name	E29
Purity	Protein G affinity chromatography
UniProt	P15941
Localization	Cytoplasmic & cell surface
Applications	Immunohistochemistry (FFPE) : 1-2ug/ml for 30 min at RT Western Blot : 2-4ug/ml
Limitations	This MUC1 antibody is available for research use only.



Western blot testing of human T-47D cell lysate with MUC1 antibody (clone E29). This glycoprotein is commonly visualized between 120~500 kDa.



IHC analysis of formalin-fixed, paraffin-embedded human breast carcinoma stained with MUC1 antibody (clone E29).



SDS-PAGE analysis of purified, BSA-free MUC1 antibody (clone E29) as confirmation of integrity and purity.

Description

In Western blotting, it recognizes proteins in MW range of 265-400kDa, identified as different glycoforms of EMA. EMA may provide a protective layer on epithelial cells against bacterial and enzyme attack. In immunohistochemical assays, it superbly stains routine formalin/paraffin carcinomas. Antibody to EMA is useful as a pan-epithelial marker for detecting early metastatic loci of carcinoma in bone marrow or liver.

Application Notes

The optimal dilution of the MUC1 antibody for each application should be determined by the researcher.

1. Staining of formalin-fixed tissues requires boiling tissue sections in pH 9 10mM Tris with 1mM EDTA for 10-20 min followed by cooling at RT for 20 minutes.
2. The prediluted format is supplied in a dropper bottle and is optimized for use in IHC. After epitope retrieval step (if required), drip mAb solution onto the tissue section and incubate at RT for 30 min.

Immunogen

Delipidated extract of human milk fat globule membranes was used as the immunogen for this MUC1 antibody.

Storage

Store the MUC1 antibody at 2-8°C (with azide) or aliquot and store at -20°C or colder (without azide).

