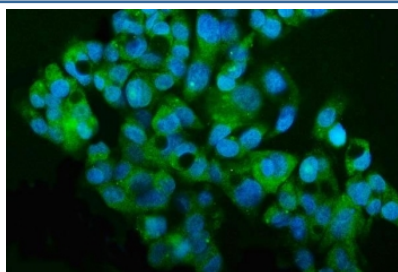


## MT2-MMP Antibody / MMP15 (RQ6328)

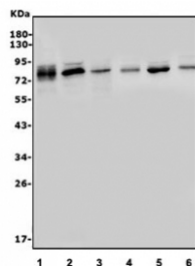
Catalog No.	Formulation	Size
RQ6328	0.5mg/ml if reconstituted with 0.2ml sterile DI water	100 ug

**Bulk quote request**

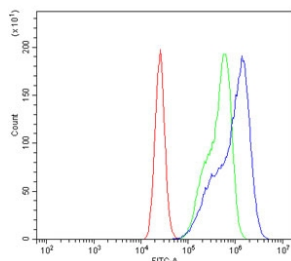
<b>Availability</b>	1-3 business days
<b>Species Reactivity</b>	Human, Mouse, Rat
<b>Format</b>	Purified
<b>Host</b>	Rabbit
<b>Clonality</b>	Polyclonal (rabbit origin)
<b>Isotype</b>	Rabbit IgG
<b>Purity</b>	Antigen affinity purified
<b>Buffer</b>	Lyophilized from 1X PBS with 2% Trehalose
<b>UniProt</b>	P51511
<b>Applications</b>	Western Blot : 0.5-1ug/ml Immunofluorescence (FFPE) : 5ug/ml Flow Cytometry : 1-3ug/million cells Direct ELISA : 0.1-0.5ug/ml
<b>Limitations</b>	This MT2-MMP antibody is available for research use only.



Immunofluorescent staining of FFPE human HepG2 cells with MT2-MMP antibody (green) and DAPI nuclear stain (blue). HIER: steam section in pH6 citrate buffer for 20 min.



Western blot testing of 1) human A431, 2) human HEK293, 3) human U-2 OS, 4) rat RH-35, 5) mouse liver and 6) mouse testis lysate with MT2-MMP antibody. Predicted molecular weight ~74 kDa.



Flow cytometry testing of human Caco-2 cells with MT2-MMP antibody at 1ug/million cells (blocked with goat sera); Red=cells alone, Green=isotype control, Blue= MT2-MMP antibody.

## Description

Matrix metalloproteinase 15 (MMP15) also known as Membrane-type-2 matrix metalloproteinase (MT2-MMP) is an enzyme that in humans is encoded by the MMP15 gene. This gene encodes a member of the peptidase M10 family and membrane-type subfamily of matrix metalloproteinases (MMPs). Proteins in this family are involved in the breakdown of extracellular matrix in normal physiological processes, such as embryonic development, reproduction, and tissue remodeling, as well as in disease processes, such as arthritis and metastasis. Members of this subfamily contain a transmembrane domain suggesting that these proteins are expressed at the cell surface rather than secreted. The encoded preproprotein is proteolytically processed to generate the mature protease. This protein may play a role in cancer progression.

## Application Notes

Optimal dilution of the MT2-MMP antibody should be determined by the researcher.

## Immunogen

Recombinant human protein (amino acids Y132-A202) was used as the immunogen for the MT2-MMP antibody.

## Storage

After reconstitution, the MT2-MMP antibody can be stored for up to one month at 4oC. For long-term, aliquot and store at -20oC. Avoid repeated freezing and thawing.