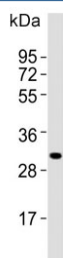


MSX1 Antibody (F54381)

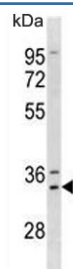
Catalog No.	Formulation	Size
F54381-0.4ML	In 1X PBS, pH 7.4, with 0.09% sodium azide	0.4 ml
F54381-0.08ML	In 1X PBS, pH 7.4, with 0.09% sodium azide	0.08 ml

[Bulk quote request](#)

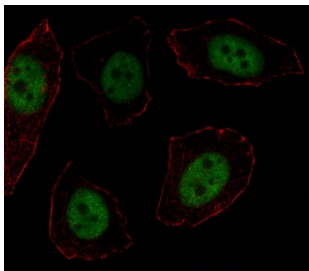
Availability	1-3 business days
Species Reactivity	Human, Mouse
Format	Purified
Host	Rabbit
Clonality	Polyclonal (rabbit origin)
Isotype	Rabbit Ig
Purity	Antigen affinity purified
UniProt	P28360
Localization	Nuclear
Applications	Western Blot : 1:500-1:2000 Immunofluorescence : 1:25
Limitations	This MSX1 antibody is available for research use only.



Western blot testing of mouse spleen lysate with MSX1 antibody. Predicted molecular weight ~31 kDa.



Western blot testing of human A375 lysate with MSX1 antibody. Predicted molecular weight ~31 kDa.



Immunofluorescent staining of fixed and permeabilized human U-251 cells with MSX1 antibody (green) and anti-Actin (red).

Description

Homeobox protein MSX-1 is a member of the muscle segment homeobox gene family. The protein functions as a transcriptional repressor during embryogenesis through interactions with components of the core transcription complex and other homeoproteins. It may also have roles in limb-pattern formation, craniofacial development, particularly odontogenesis, and tumor growth inhibition. Mutations in this gene, which was once known as homeobox 7, have been associated with nonsyndromic cleft lip with or without cleft palate 5, Witkop syndrome, Wolf-Hirschorn syndrome, and autosomal dominant hypodontia.

Application Notes

The stated application concentrations are suggested starting points. Titration of the MSX1 antibody may be required due to differences in protocols and secondary/substrate sensitivity.

Immunogen

A portion of amino acids 111-138 from the human protein was used as the immunogen for the MSX1 antibody.

Storage

Aliquot the MSX1 antibody and store frozen at -20°C or colder. Avoid repeated freeze-thaw cycles.