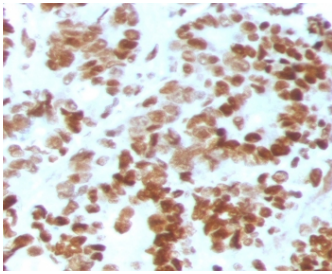


## MSH6 Antibody [clone MST6-2] (V7592)

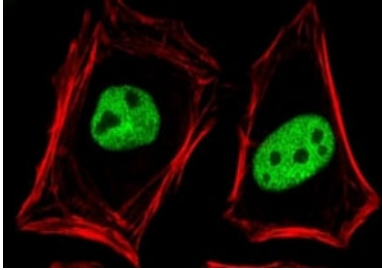
Catalog No.	Formulation	Size
V7592-100UG	0.2 mg/ml in 1X PBS with 0.1 mg/ml BSA (US sourced) and 0.05% sodium azide	100 ug
V7592-20UG	0.2 mg/ml in 1X PBS with 0.1 mg/ml BSA (US sourced) and 0.05% sodium azide	20 ug
V7592SAF-100UG	1 mg/ml in 1X PBS; BSA free, sodium azide free	100 ug
V7592IHC-7ML	Prediluted in 1X PBS with 0.1 mg/ml BSA (US sourced) and 0.05% sodium azide; *For IHC use only*	7 ml

[Bulk quote request](#)

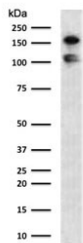
<b>Availability</b>	1-3 business days
<b>Species Reactivity</b>	Human
<b>Format</b>	Purified
<b>Host</b>	Mouse
<b>Clonality</b>	Monoclonal (mouse origin)
<b>Isotype</b>	Mouse IgG2b, kappa
<b>Clone Name</b>	MST6-2
<b>Purity</b>	Protein G affinity chromatography
<b>UniProt</b>	P52701
<b>Localization</b>	Nucleus
<b>Applications</b>	Flow Cytometry : 1-2ug/million cells Immunofluorescence : 1-2ug/ml Western Blot : 1-2ug/ml Immunohistochemistry (FFPE) : 1-2ug/ml for 30 minutes at RT Prediluted IHC Only Format : incubate for 30 min at RT (1)
<b>Limitations</b>	This MSH6 antibody is available for research use only.



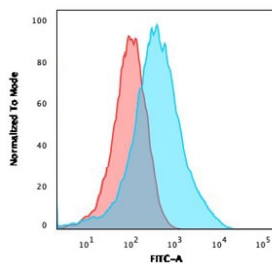
IHC staining of FFPE human colon carcinoma with MSH6 antibody (clone MST6-2).  
HIER: boil tissue sections in pH 9 10mM Tris with 1mM EDTA for 10-20 min and allow to cool before testing.



Immunofluorescence staining of PFA-fixed human MCF-7 cells with MSH6 antibody (green, clone MST6-2) and Phalloidin (red).



Western blot testing of human HCT116 lysate with MSH6 antibody (clone MST6-2).  
Expected molecular weight: 120-160 kDa depending on phosphorylation level.



Flow cytometry testing of fixed and permeabilized human MCF-7 cells with MSH6 antibody (clone MST6-2); Red=isotype control, Blue= Estrogen Receptor alpha antibody.

## Description

MSH6 is a component of the post-replicative DNA mismatch repair system (MMR). Heterodimerizes with MSH2 to form MutS alpha, which binds to DNA mismatches thereby initiating DNA repair. When bound, MutS alpha bends the DNA helix and shields approximately 20 base pairs, and recognizes single base mismatches and dinucleotide insertion-deletion loops (IDL) in the DNA. After mismatch binding, forms a ternary complex with the MutL alpha heterodimer, which is thought to be responsible for directing the downstream MMR events, including strand discrimination, excision, and resynthesis. [UniProt]

## Application Notes

Optimal dilution of the MSH6 antibody should be determined by the researcher.

1. The prediluted format is supplied in a dropper bottle and is optimized for use in IHC. After epitope retrieval step (if required), drip mAb solution onto the tissue section and incubate at RT for 30 min.

## Immunogen

A recombinant human MSH6 protein fragment within amino acids 374-540 was used as the immunogen for the MSH6 antibody.

## Storage

Store the MSH6 antibody at 2-8oC (with azide) or aliquot and store at -20oC or colder (without azide).