

MPP3 Antibody (F54665)

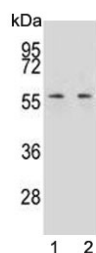
Catalog No.	Formulation	Size
F54665-0.4ML	In 1X PBS, pH 7.4, with 0.09% sodium azide	0.4 ml
F54665-0.08ML	In 1X PBS, pH 7.4, with 0.09% sodium azide	0.08 ml

[Bulk quote request](#)

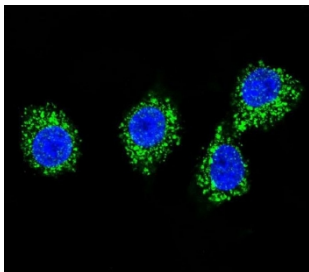
Availability	1-3 business days
Species Reactivity	Human
Format	Purified
Clonality	Polyclonal (rabbit origin)
Isotype	Rabbit Ig
Purity	Antigen affinity purified
UniProt	Q13368
Applications	Flow Cytometry : 1:25 (1x10e6 cells) Immunofluorescence : 1:25 Western Blot : 1:500-1:2000
Limitations	This MPP3 antibody is available for research use only.



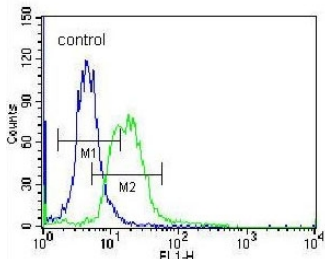
Western blot testing of human HepG2 cell lysate with MPP3 antibody. Predicted molecular weight ~66 kDa.



Western blot testing of human 1) K562 and 2) NCI-H292 cell lysate with MPP3 antibody. Predicted molecular weight ~66 kDa.



Immunofluorescent staining of human MDA-MB-231 cells with MPP3 antibody (green) and DAPI nuclear stain (blue).



Flow cytometry testing of human K562 cells with MPP3 antibody; Blue=isotype control, Green= MPP3 antibody.

Description

This gene product is a member of a family of membrane-associated proteins termed MAGUKs (membrane-associated guanylate kinase homologs). MAGUKs interact with the cytoskeleton and regulate cell proliferation, signaling pathways, and intracellular junctions. This protein contains a conserved sequence, called the SH3 (src homology 3) motif, found in several other proteins that associate with the cytoskeleton and are suspected to play important roles in signal transduction. Alternatively spliced transcript variants have been identified. One transcript variant is experimentally supported, but it doesn't encode a protein.

Application Notes

The stated application concentrations are suggested starting points. Titration of the MPP3 antibody may be required due to differences in protocols and secondary/substrate sensitivity.

Immunogen

A portion of amino acids 406-434 from the human protein was used as the immunogen for the MPP3 antibody.

Storage

Aliquot the MPP3 antibody and store frozen at -20oC or colder. Avoid repeated freeze-thaw cycles.