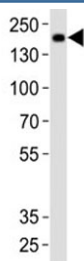


Mouse Insrr Antibody (F52851)

Catalog No.	Formulation	Size
F52851-0.4ML	In 1X PBS, pH 7.4, with 0.09% sodium azide	0.4 ml
F52851-0.08ML	In 1X PBS, pH 7.4, with 0.09% sodium azide	0.08 ml

Bulk quote request

Availability	1-3 business days
Species Reactivity	Mouse, Rat
Format	Antigen affinity purified
Clonality	Polyclonal (rabbit origin)
Isotype	Rabbit Ig
Purity	Antigen affinity
UniProt	Q9WTL4
Applications	Western Blot : 1:1000
Limitations	This mouse Insrr antibody is available for research use only.



Western blot analysis of lysate from rat brain tissue using Insrr antibody at 1:1000.
Expected size: ~80 kDa, 144 kDa.

Description

Insulin related receptor is a receptor with tyrosine-protein kinase activity. Functions as a pH sensing receptor which is activated by increased extracellular pH. Activates an intracellular signaling pathway that involves IRS1 and AKT1/PKB.

Application Notes

Titration of the mouse Insrr antibody may be required due to differences in protocols and secondary/substrate sensitivity.

Immunogen

This mouse Insrr antibody was produced from a rabbit immunized with a KLH conjugated synthetic peptide between

1265-1295 amino acids from the C-terminal region of mouse Insrr.

Storage

Aliquot the mouse Insrr antibody and store frozen at -20oC or colder. Avoid repeated freeze-thaw cycles.