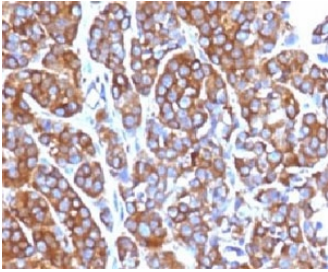


Moesin Antibody [clone EDLP70] (V7107)

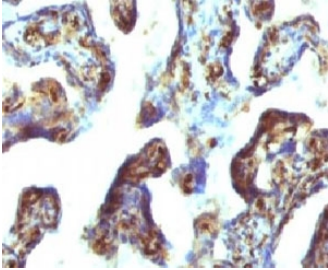
Catalog No.	Formulation	Size
V7107-100UG	0.2 mg/ml in 1X PBS with 0.1 mg/ml BSA (US sourced) and 0.05% sodium azide	100 ug
V7107-20UG	0.2 mg/ml in 1X PBS with 0.1 mg/ml BSA (US sourced) and 0.05% sodium azide	20 ug
V7107SAF-100UG	1 mg/ml in 1X PBS; BSA free, sodium azide free	100 ug
V7107IHC-7ML	Prediluted in 1X PBS with 0.1 mg/ml BSA (US sourced) and 0.05% sodium azide; *For IHC use only*	7 ml

Bulk quote request

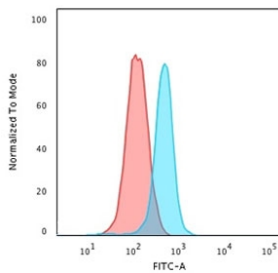
Availability	1-3 business days
Species Reactivity	Human
Format	Purified
Host	Mouse
Clonality	Monoclonal (mouse origin)
Isotype	Mouse IgG1, kappa
Clone Name	EDLP70
Purity	Protein G affinity chromatography
UniProt	P26038
Localization	Cytoplasmic & cell surface
Applications	Western Blot : 1-2ug/ml Flow Cytometry : 0.5-1ug/million cells in 0.1ml Immunofluorescence : 1-2ug/ml Immunohistochemistry (FFPE) : 1-2ug/ml for 30 min at RT Prediluted IHC Only Format : incubate for 30 min at RT (1)
Limitations	This Moesin antibody is available for research use only.



IHC testing of FFPE human melanoma with Moesin antibody (clone EDLP70). HIER: steam section in pH6 citrate buffer for 20 min.



IHC testing of FFPE human placenta with Moesin antibody (clone EDLP70). HIER: steam section in pH6 citrate buffer for 20 min.



Flow cytometry testing of human K562 cells with Moesin antibody (clone EDLP70); Red=isotype control, Blue= Moesin antibody.



Western blot testing of human Jurkat cell lysate with Moesin antibody (clone EDLP70). Predicted molecular weight ~68 kDa but routinely observed at 68-78 kDa.

Description

Moesin (for membrane-organizing extension spike protein) is a member of the ERM protein family which includes ezrin and radixin. ERM proteins appear to function as cross-linkers between plasma membranes and actin-based cytoskeletons. Moesin is localized to filopodia and other membranous protrusions that are important for cell-cell recognition and signaling and for cell movement. [Wiki]

Application Notes

Titering of the Moesin antibody may be required for optimal performance.

1. The prediluted format is supplied in a dropper bottle and is optimized for use in IHC. After epitope retrieval step (if required), drip mAb solution onto the tissue section and incubate at RT for 30 min.

Immunogen

Recombinant full-length human protein was used as the immunogen for the Moesin antibody.

Storage

Store the Moesin antibody at 2-8oC (with azide) or aliquot and store at -20oC or colder (without azide).