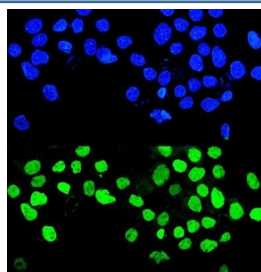


## MMP28 Antibody (RQ5830)

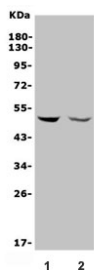
Catalog No.	Formulation	Size
RQ5830	0.5mg/ml if reconstituted with 0.2ml sterile DI water	100 ug

**Bulk quote request**

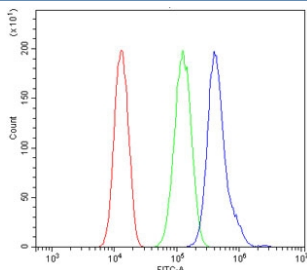
<b>Availability</b>	1-3 business days
<b>Species Reactivity</b>	Human
<b>Format</b>	Antigen affinity purified
<b>Host</b>	Rabbit
<b>Clonality</b>	Polyclonal (rabbit origin)
<b>Isotype</b>	Rabbit IgG
<b>Purity</b>	Affinity purified
<b>Buffer</b>	Lyophilized from 1X PBS with 2% Trehalose and 0.025% sodium azide
<b>UniProt</b>	Q9H239
<b>Applications</b>	Western Blot : 0.5-1ug/ml Immunofluorescence : 2-4ug/ml Flow Cytometry : 1-3ug/million cells Direct ELISA : 0.1-0.5ug/ml
<b>Limitations</b>	This MMP28 antibody is available for research use only.



Immunofluorescent staining of FFPE human A431 cells with MMP28 antibody (green) and DAPI nuclear stain (blue). HIER: steam section in pH6 citrate buffer for 20 min.



Western blot testing of 1) placenta and 2) A549 lysate with MMP28 antibody. Predicted molecular weight ~48 kDa.



Flow cytometry testing of human A549 cells with MMP28 antibody at 1ug/million cells (blocked with goat sera); Red=cells alone, Green=isotype control, Blue= MMP28 antibody.

## Description

Matrix metalloproteinase 28 also known as epilysin is an enzyme that in humans is encoded by the MMP28 gene. Proteins of the matrix metalloproteinase (MMP) family are involved in the breakdown of extracellular matrix for both normal physiological processes, such as embryonic development, reproduction and tissue remodeling, and disease processes, such as asthma and metastasis. This gene encodes a secreted enzyme that degrades casein. Its expression pattern suggests that it plays a role in tissue homeostasis and in wound repair. Alternative splicing of this gene results in multiple transcript variants.

## Application Notes

Optimal dilution of the MMP28 antibody should be determined by the researcher.

## Immunogen

Recombinant human protein (amino acids F123-L505) was used as the immunogen for the MMP28 antibody.

## Storage

After reconstitution, the MMP28 antibody can be stored for up to one month at 4°C. For long-term, aliquot and store at -20°C. Avoid repeated freezing and thawing.