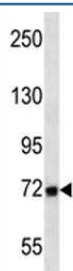


MMP2 Antibody (F43169)

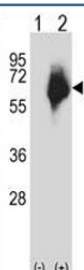
Catalog No.	Formulation	Size
F43169-0.4ML	In 1X PBS, pH 7.4, with 0.09% sodium azide	0.4 ml
F43169-0.08ML	In 1X PBS, pH 7.4, with 0.09% sodium azide	0.08 ml

[Bulk quote request](#)

Availability	1-3 business days
Species Reactivity	Human
Predicted Reactivity	Mouse, Rat, Chicken, Rabbit
Format	Antigen affinity purified
Clonality	Polyclonal (rabbit origin)
Isotype	Rabbit Ig
Purity	Antigen affinity
UniProt	P08253
Applications	Western Blot : 1:1000
Limitations	This MMP2 antibody is available for research use only.



MMP2 antibody western blot analysis in T47D lysate. Expected molecular weight: ~72 kDa (pro form), ~63 kDa (cleaved form).



Western blot analysis of MMP2 antibody and 293 cell lysate either nontransfected (Lane 1) or transiently transfected (2) with the MMP2 gene. Expected molecular weight: ~72 kDa (pro form), ~63 kDa (cleaved form).

Description

Proteins of the matrix metalloproteinase (MMP) family are involved in the breakdown of extracellular matrix in normal physiological processes, such as embryonic development, reproduction, and tissue remodeling, as well as in disease processes, such as arthritis and metastasis. Most MMP's are secreted as inactive proproteins which are activated when cleaved by extracellular proteinases. This gene encodes an enzyme which degrades type IV collagen, the major structural component of basement membranes. The enzyme plays a role in endometrial menstrual breakdown, regulation of vascularization and the inflammatory response. Mutations in this gene have been associated with Winchester syndrome and Nodulosis-Arthropathy-Osteolysis (NAO) syndrome. Two transcript variants encoding different isoforms have been found for this gene.

Application Notes

Titration of the MMP2 antibody may be required due to differences in protocols and secondary/substrate sensitivity.

Immunogen

A portion of amino acids 303-331 from the human protein was used as the immunogen for this MMP2 antibody.

Storage

Aliquot the MMP2 antibody and store frozen at -20oC or colder. Avoid repeated freeze-thaw cycles.