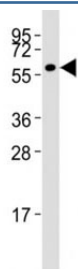


MMP14 Antibody [clone 133CT15.10.5.1] (F40218)

Catalog No.	Formulation	Size
F40218-0.4ML	In 1X PBS, pH 7.4, with 0.09% sodium azide	0.4 ml
F40218-0.08ML	In 1X PBS, pH 7.4, with 0.09% sodium azide	0.08 ml

[Bulk quote request](#)

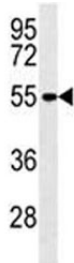
Availability	1-3 business days
Species Reactivity	Human
Predicted Reactivity	Bovine, Mouse, Pig, Rabbit, Rat
Format	Purified
Host	Mouse
Clonality	Monoclonal (mouse origin)
Isotype	Mouse IgM
Clone Name	133CT15.10.5.1
Purity	Purified
UniProt	P50281
Applications	Western Blot : 1:100-1:1000 Immunofluorescence : 1:10-1:50
Limitations	This MMP14 antibody is available for research use only.



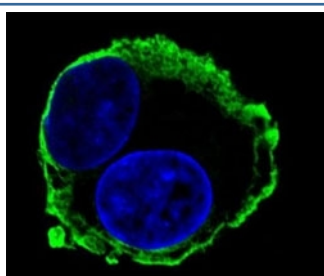
Western blot testing of MMP14 antibody at 1:1000 dilution + HT-1080 lysate; Predicted molecular weight: ~66/54kDa.



Western blot testing of MMP14 antibody at 1:500 dilution + A2058 lysate; Predicted molecular weight: ~66/54kDa.



MMP14 antibody western blot analysis in A2058 lysate. Predicted molecular weight: ~66/54kDa.



Confocal immunofluorescent analysis of MMP14 antibody with HepG2 cells followed by Alexa Fluor 488-conjugated goat anti-mouse IgG (green). DAPI was used as a nuclear counterstain (blue).

Description

Proteins of the matrix metalloproteinase (MMP) family are involved in the breakdown of extracellular matrix in normal physiological processes, such as embryonic development, reproduction, and tissue remodeling, as well as in disease processes, such as arthritis and metastasis. Most MMP's are secreted as inactive proproteins which are activated when cleaved by extracellular proteinases. However, the protein encoded by this gene is a member of the membrane-type MMP (MT-MMP) subfamily; each member of this subfamily contains a potential transmembrane domain suggesting that these proteins are expressed at the cell surface rather than secreted. This protein activates MMP2 protein, and this activity may be involved in tumor invasion.

Application Notes

Titration of the MMP14 antibody may be required due to differences in protocols and secondary/substrate sensitivity.

Immunogen

A portion of amino acids 470-499 from the human protein was used as the immunogen for this MMP14 antibody.

Storage

Aliquot the MMP14 antibody and store frozen at -20°C or colder. Avoid repeated freeze-thaw cycles.

