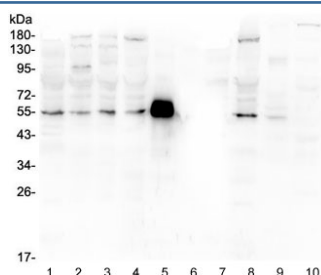


## MMP13 Antibody / Collagenase 3 (R32588)

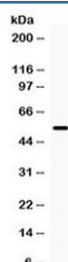
Catalog No.	Formulation	Size
R32588	0.5mg/ml if reconstituted with 0.2ml sterile DI water	100 ug

**Bulk quote request**

<b>Availability</b>	1-3 business days
<b>Species Reactivity</b>	Human, Monkey
<b>Format</b>	Antigen affinity purified
<b>Host</b>	Rabbit
<b>Clonality</b>	Polyclonal (rabbit origin)
<b>Isotype</b>	Rabbit IgG
<b>Purity</b>	Antigen affinity
<b>Buffer</b>	Lyophilized from 1X PBS with 2.5% BSA and 0.025% sodium azide
<b>UniProt</b>	P45452
<b>Localization</b>	Secreted, extracellular matrix
<b>Applications</b>	Western Blot : 0.5-1ug/ml
<b>Limitations</b>	This MMP13 antibody is available for research use only.



Western blot testing of human 1) PC-3, 2) U-2 OS, 3) A549, 4) HEK293, 5) rabbit IgG, 6) marker, 7) human MDA-MB-453, 8) monkey COS-7, 9) rat lung and 10) mouse lung lysate with MMP13 antibody at 0.5ug/ml. Predicted molecular weight ~54 kDa.



Western blot testing of human HeLa cell lysate with MMP13 antibody at 0.5ug/ml. Predicted molecular weight ~54 kDa.

## Description

Collagenase 3 is an enzyme that in humans is encoded by the MMP13 gene. This gene encodes a member of the peptidase M10 family of matrix metalloproteinases (MMPs). Proteins in this family are involved in the breakdown of extracellular matrix in normal physiological processes, such as embryonic development, reproduction, and tissue remodeling, as well as in disease processes, such as arthritis and metastasis. The encoded preproprotein is proteolytically processed to generate the mature protease. This protease cleaves type II collagen more efficiently than types I and III. It may be involved in articular cartilage turnover and cartilage pathophysiology associated with osteoarthritis. Mutations in this gene are associated with metaphyseal anadysplasia. This gene is part of a cluster of MMP genes on chromosome 11.

## Application Notes

Optimal dilution of the MMP13 antibody should be determined by the researcher.

## Immunogen

Amino acids 109-154 (RTLKWSKMNLTYRIVNYTPDMTHSEVEKAFKKAFKVWSDVTPLNFT-human) were used as the immunogen for the MMP13 antibody.

## Storage

After reconstitution, the MMP13 antibody can be stored for up to one month at 4oC. For long-term, aliquot and store at -20oC. Avoid repeated freezing and thawing.