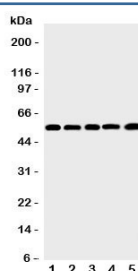


## MMP12 Antibody (R31265)

Catalog No.	Formulation	Size
R31265	0.5mg/ml if reconstituted with 0.2ml sterile DI water	100 ug

[Bulk quote request](#)

Availability	1-3 business days
Species Reactivity	Human
Format	Antigen affinity purified
Host	Rabbit
Clonality	Polyclonal (rabbit origin)
Isotype	Rabbit IgG
Purity	Antigen affinity
Buffer	Lyophilized from 1X PBS with 2.5% BSA and 0.025% sodium azide/thimerosal
UniProt	P39900
Applications	Western Blot : 0.5-1ug/ml
Limitations	This MMP12 antibody is available for research use only.



Western blot testing of MMP12 antibody and Lane 1: human SMMC-7721; 2: mouse HEPA; 3: (h) HeLa; 4: (h) K562; 5: (h) MCF-7 cell lysate. Predicted molecular weight: ~55 kDa (pro form), ~45 kDa and ~22 kDa (active forms).

## Description

Matrix metalloproteinase-12, also known as MME or ME, is an enzyme that in humans is encoded by the MMP12 gene. The gene is part of a cluster of MMP genes which localize to chromosome 11q22.2. It is thought that the protein encoded by this gene is cleaved at both ends to yield the active enzyme, but this processing has not been fully described. The enzyme degrades soluble and insoluble elastin. It may play a role in aneurysm formation and studies in mice suggest a role in the development of emphysema. This gene may involved in tissue injury and remodeling.

## Application Notes

The stated application concentrations are suggested starting amounts. Titration of the MMP12 antibody may be required due to differences in protocols and secondary/substrate sensitivity.

## Immunogen

An amino acid sequence from the C-terminus of human Matrix metalloproteinase-12 (KIDAVFYSKNKYYYYFFQ) was used as the immunogen for this MMP12 antibody.

## Storage

After reconstitution, the MMP12 antibody can be stored for up to one month at 4°C. For long-term, aliquot and store at -20°C. Avoid repeated freezing and thawing.