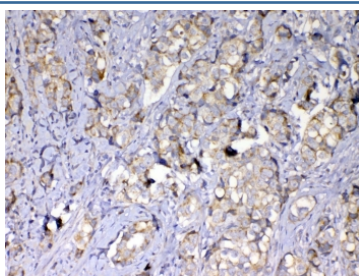


## MMP10 Antibody (R32949)

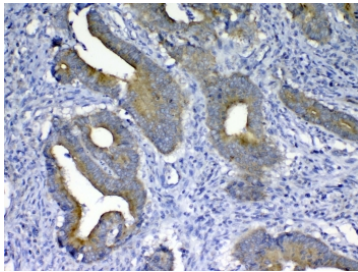
Catalog No.	Formulation	Size
R32949	0.5mg/ml if reconstituted with 0.2ml sterile DI water	100 ug

**Bulk quote request**

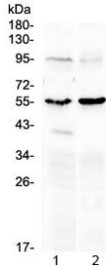
<b>Availability</b>	1-3 business days
<b>Species Reactivity</b>	Human, Mouse, Rat
<b>Format</b>	Antigen affinity purified
<b>Host</b>	Rabbit
<b>Clonality</b>	Polyclonal (rabbit origin)
<b>Isotype</b>	Rabbit IgG
<b>Purity</b>	Antigen affinity
<b>Buffer</b>	Lyophilized from 1X PBS with 2% Trehalose
<b>UniProt</b>	P09238
<b>Localization</b>	Secreted
<b>Applications</b>	Western Blot : 0.5-1ug/ml IHC (FFPE) : 1-2ug/ml IF/ICC (FFPE) : 1-2ug/ml Direct ELISA (human Recombinant Protein) : 0.1-0.5ug/ml (BSA-free format available)
<b>Limitations</b>	This MMP10 antibody is available for research use only.



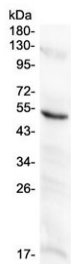
IHC testing of FFPE human breast cancer tissue with MMP10 antibody at 1ug/ml. Required HIER: steam section in pH6 citrate buffer for 20 min and allow to cool prior to testing.



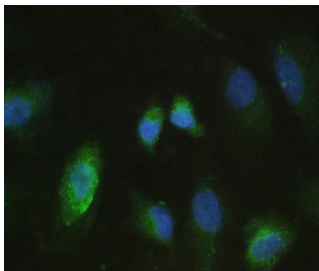
IHC testing of FFPE human colon cancer tissue with MMP10 antibody at 1ug/ml. Required HIER: steam section in pH6 citrate buffer for 20 min and allow to cool prior to testing.



Western blot testing of 1) rat heart and 2) mouse heart lysate with MMP10 antibody at 0.5ug/ml. Expected molecular weight ~54 kDa.



Western blot testing of human placental lysate with MMP10 antibody at 0.5ug/ml. Expected molecular weight ~54 kDa.



IF/ICC staining of FFPE human A549 cells with MMP10 antibody at 1ug/ml. Required HIER: steam section in pH6 citrate buffer for 20 min and allow to cool prior to testing.

## Description

Stromelysin-2, also known as Matrix metalloproteinase-10 (MMP-10) or Transin-2, is an enzyme that in humans is encoded by the MMP10 gene. Proteins of the matrix metalloproteinase (MMP) family are involved in the breakdown of extracellular matrix in normal physiological processes, such as embryonic development, reproduction, and tissue remodeling, as well as in disease processes, such as arthritis and metastasis. Most MMP's are secreted as inactive proproteins which are activated when cleaved by extracellular proteinases. The enzyme encoded by this gene degrades proteoglycans and fibronectin. The gene is part of a cluster of MMP genes which localize to chromosome 11q22.3.

## Application Notes

Optimal dilution of the MMP10 antibody should be determined by the researcher.

## Immunogen

A recombinant human protein corresponding to amino acids Y239-C476 was used as the immunogen for the MMP10 antibody.

## Storage

After reconstitution, the MMP10 antibody can be stored for up to one month at 4oC. For long-term, aliquot and store at -20oC. Avoid repeated freezing and thawing.