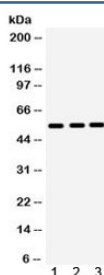


MMP10 Antibody (R31922)

Catalog No.	Formulation	Size
R31922	0.5mg/ml if reconstituted with 0.2ml sterile DI water	100 ug

Bulk quote request

Availability	1-3 business days
Species Reactivity	Human
Format	Antigen affinity purified
Host	Rabbit
Clonality	Polyclonal (rabbit origin)
Isotype	Rabbit IgG
Purity	Antigen affinity
Buffer	Lyophilized from 1X PBS with 2.5% BSA and 0.025% sodium azide
UniProt	P09238
Localization	Secreted
Applications	Western Blot : 0.1-0.5ug/ml
Limitations	This MMP10 antibody is available for research use only.



Western blot testing of 1) human placenta, 2) HeLa and 3) SGC lysate with MMP10 antibody. Expected molecular weight ~54 kDa.

Description

Stromelysin-2 also known as matrix metalloproteinase-10 or Transin-2 is an enzyme that in humans is encoded by the MMP10 gene. Proteins of the matrix metalloproteinase (MMP) family are involved in the breakdown of extracellular matrix in normal physiological processes, such as embryonic development, reproduction, and tissue remodeling, as well as in disease processes, such as arthritis and metastasis. Most MMP's are secreted as inactive proproteins which are activated when cleaved by extracellular proteinases. The enzyme encoded by this gene degrades proteoglycans and fibronectin.

The gene is part of a cluster of MMP genes which localize to chromosome 11q22.3.

Application Notes

Optimal dilution of the MMP10 antibody should be determined by the researcher.

Immunogen

Amino acids RFDENSQSMEQGFPRLIADDFPGVEPKVDAVLQAF of human MMP10 were used as the immunogen for the MMP10 antibody.

Storage

After reconstitution, the MMP10 antibody can be stored for up to one month at 4oC. For long-term, aliquot and store at -20oC. Avoid repeated freezing and thawing.