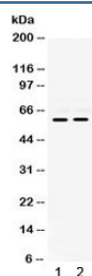


## MMP-8 Antibody (R32022)

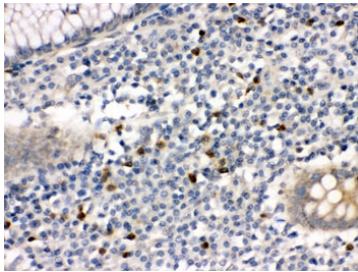
Catalog No.	Formulation	Size
R32022	0.5mg/ml if reconstituted with 0.2ml sterile DI water	100 ug

**Bulk quote request**

<b>Availability</b>	1-3 business days
<b>Species Reactivity</b>	Human
<b>Format</b>	Antigen affinity purified
<b>Host</b>	Rabbit
<b>Clonality</b>	Polyclonal (rabbit origin)
<b>Isotype</b>	Rabbit IgG
<b>Purity</b>	Antigen affinity
<b>Buffer</b>	Lyophilized from 1X PBS with 2.5% BSA and 0.025% sodium azide
<b>UniProt</b>	P22894
<b>Localization</b>	Cytoplasmic
<b>Applications</b>	Western Blot : 0.1-0.5ug/ml IHC (FFPE) : 0.5-1ug/ml ELISA : 0.1-0.5ug/ml (human protein tested); request BSA-free format for coating
<b>Limitations</b>	This MMP-8 antibody is available for research use only.



Western blot testing of human 1) K562 and 2) Jurkat cell lysate with MMP-8 antibody.  
Expected molecular weight: 55 kDa (latent), 46, 42 kDa (active).



IHC testing of FFPE human appendicitis tissue with MMP-8 antibody. HIER: Boil the paraffin sections in pH 6, 10mM citrate buffer for 20 minutes and allow to cool prior to staining.

## Description

MMP-8 (Matrix metalloproteinase 8) is a member of the family of matrix metalloproteinases. It is distinct from the collagenase of skin fibroblasts and synovial cells in substrate specificity and immunologic crossreactivity. MMP8 is mapped to 11q21-q22. MMP-8 is an enzyme that degrades fibrillar collagens imparting strength to the fetal membranes, is expressed by leukocytes and chorionic cytotrophoblast cells. The enzyme exhibits 58% homology to human fibroblast collagenase and has the same domain structure. It consists of a 20-residue signal peptide, and an 80-residue propeptide that is lost on autolytic activation by cleavage of an M-L bond. MMP8 was found to possess 57% identity with the deduced protein sequence for fibroblast collagenase with 72% chemical similarity. Matrix metalloproteinases (MMPs) have fundamental roles in tumor progression, but most clinical trials with MMP inhibitors have not shown improvements in individuals with cancer. MMP8 has a paradoxical protective role in cancer and provides a genetic model to evaluate the molecular basis of gender differences in cancer susceptibility.

## Application Notes

Optimal dilution of the MMP-8 antibody should be determined by the researcher.

## Immunogen

Amino acids NYTPQLSEAEVERAIKDAFELWSVASPLIFTRISQ of human MMP8 were used as the immunogen for the MMP-8 antibody.

## Storage

After reconstitution, the MMP-8 antibody can be stored for up to one month at 4°C. For long-term, aliquot and store at -20°C. Avoid repeated freezing and thawing.

## References (1)