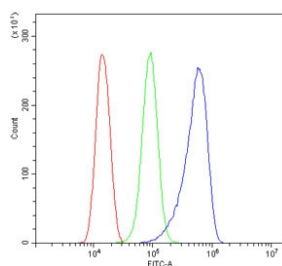


MLC1 Antibody (RQ5896)

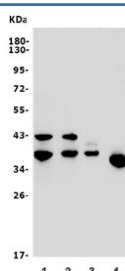
Catalog No.	Formulation	Size
RQ5896	0.5mg/ml if reconstituted with 0.2ml sterile DI water	100 ug

Bulk quote request

Availability	1-3 business days
Species Reactivity	Human, Mouse, Rat
Format	Antigen affinity purified
Host	Rabbit
Clonality	Polyclonal (rabbit origin)
Isotype	Rabbit IgG
Purity	Affinity purified
Buffer	Lyophilized from 1X PBS with 2% Trehalose and 0.025% sodium azide
UniProt	Q15049
Applications	Western Blot : 0.5-1ug/ml Flow Cytometry : 1-3ug/million cells Direct ELISA : 0.1-0.5ug/ml
Limitations	This MLC1 antibody is available for research use only.



Flow cytometry testing of human ThP-1 cells with MLC1 antibody at 1ug/million cells (blocked with goat sera); Red=cells alone, Green=isotype control, Blue= CD59 antibody.



Western blot testing of 1) rat brain, 2) mouse brain, 3) human SH-SY5Y and 4) rat C6 lysate with MLC1 antibody. Molecular weight: commonly observed at ~32-41 kDa / 70-72 kDa / 115kDa (monomer/dimer/trimer).

Description

The function of this gene product is unknown; however, homology to other proteins suggests that it may be an integral membrane transporter. Mutations in this gene have been associated with megalencephalic leukoencephalopathy with subcortical cysts, an autosomal recessive neurological disorder. Alternatively spliced transcript variants encoding different isoforms have been identified.

Application Notes

Optimal dilution of the MLC1 antibody should be determined by the researcher.

Immunogen

Recombinant human protein (amino acids M1-Q377) was used as the immunogen for the MLC1 antibody.

Storage

After reconstitution, the MLC1 antibody can be stored for up to one month at 4°C. For long-term, aliquot and store at -20°C. Avoid repeated freezing and thawing.