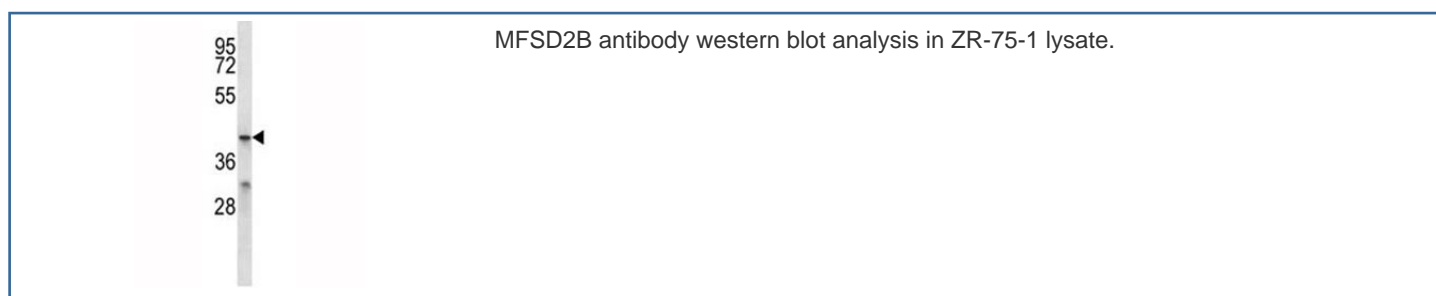


MFSD2B Antibody (F40102)

Catalog No.	Formulation	Size
F40102-0.4ML	In 1X PBS, pH 7.4, with 0.09% sodium azide	0.4 ml
F40102-0.08ML	In 1X PBS, pH 7.4, with 0.09% sodium azide	0.08 ml

[Bulk quote request](#)

Availability	1-3 business days
Species Reactivity	Human
Format	Antigen affinity purified
Host	Rabbit
Clonality	Polyclonal (rabbit origin)
Isotype	Rabbit Ig
Purity	Antigen affinity
UniProt	A6NFX1
Applications	Western Blot : 1:1000
Limitations	This MFSD2B antibody is available for research use only.



Description

Major facilitator superfamily domain-containing protein 2B

Application Notes

Titration of the MFSD2B antibody may be required due to differences in protocols and secondary/substrate sensitivity.

Immunogen

A portion of amino acids 383-411 from the human protein was used as the immunogen for this MFSD2B antibody.

Storage

Aliquot the MFSD2B antibody and store frozen at -20oC or colder. Avoid repeated freeze-thaw cycles.