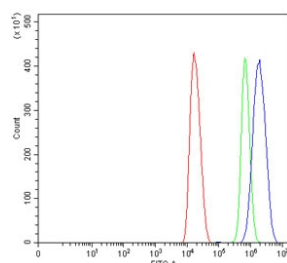


METTL3 Antibody / M6A (RQ4669)

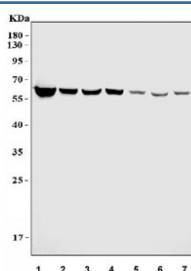
Catalog No.	Formulation	Size
RQ4669	0.5mg/ml if reconstituted with 0.2ml sterile DI water	100 ug

Bulk quote request

Availability	1-3 business days
Species Reactivity	Human, Mouse, Rat
Format	Antigen affinity purified
Host	Rabbit
Clonality	Polyclonal (rabbit origin)
Isotype	Rabbit IgG
Purity	Antigen affinity purified
Buffer	Lyophilized from 1X PBS with 2% Trehalose
UniProt	Q86U44
Applications	Western Blot : 0.5-1ug/ml Flow Cytometry : 1-3ug/million cells Direct ELISA : 0.1-0.5ug/ml (human recombinant protein)
Limitations	This METTL3 antibody is available for research use only.



Flow cytometry testing of mouse HEPA1-6 cells with METTL3 antibody at 1ug/million cells (blocked with goat sera); Red=cells alone, Green=isotype control, Blue= METTL3 antibody.



Western blot testing of 1) human HepG2, 2) human PC-3, 3) human A549, 4) human HaCaT, 5) rat brain, 6) rat testis and 7) mouse brain lysate with METTL3 antibody at 0.5ug/ml. Expected molecular weight: 64-70 kDa.

Description

N6-adenosine-methyltransferase 70 kDa subunit (METTL3) is an enzyme that in humans is encoded by the METTL3 gene. It is mapped to 14q11.2. This gene encodes the 70 kDa subunit of MT-A which is part of N6-adenosine-methyltransferase. This enzyme is involved in the posttranscriptional methylation of internal adenosine residues in eukaryotic mRNAs, forming N6-methyladenosine.

Application Notes

Optimal dilution of the METTL3 antibody should be determined by the researcher.

Immunogen

Amino acids Q423-D571 from the human protein were used as the immunogen for the METTL3 antibody.

Storage

After reconstitution, the METTL3 antibody can be stored for up to one month at 4°C. For long-term, aliquot and store at -20°C. Avoid repeated freezing and thawing.