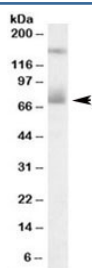


## Mesothelin Antibody (R33304)

Catalog No.	Formulation	Size
R33304-100UG	0.5 mg/ml in 1X TBS, pH7.3, with 0.5% BSA (US sourced) and 0.02% sodium azide	100 ug

[Bulk quote request](#)

Availability	1-3 business days
Species Reactivity	Human
Format	Antigen affinity purified
Clonality	Polyclonal (goat origin)
Isotype	Goat Ig
Purity	Antigen affinity
Gene ID	10232
Applications	Western Blot : 0.3-1ug/ml ELISA (peptide) LOD : 1:64000
Limitations	This Mesothelin antibody is available for research use only.



Western blot testing of human placenta lysate with Mesothelin antibody at 0.3ug/ml. The expected ~70kDa band and the additional ~150kDa band are both blocked by the immunizing peptide.

## Description

Additional name(s) for this target protein: MSLN

## Application Notes

Optimal dilution of the Mesothelin antibody should be determined by the researcher.

## Immunogen

Amino acids CPSGKKAREIDES were used as the immunogen for this Mesothelin antibody.

## Storage

Aliquot and store the Mesothelin antibody at -20oC.