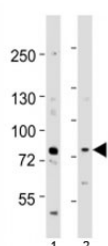


Melk Antibody (F53274)

Catalog No.	Formulation	Size
F53274-0.4ML	In 1X PBS, pH 7.4, with 0.09% sodium azide	0.4 ml
F53274-0.08ML	In 1X PBS, pH 7.4, with 0.09% sodium azide	0.08 ml

[Bulk quote request](#)

Availability	1-3 business days
Species Reactivity	Mouse
Format	Antigen affinity purified
Host	Rabbit
Clonality	Polyclonal (rabbit origin)
Isotype	Rabbit Ig
Purity	Antigen affinity
UniProt	Q61846
Applications	Western Blot : 1:1000
Limitations	This Melk antibody is available for research use only.



Western blot testing of Melk antibody at 1:1000 dilution. Lane 1: mouse spleen lysate; 2: mouse thymus lysate; Predicted molecular weight ~ 73 kDa.

Description

Serine/threonine-protein kinase involved in various processes such as cell cycle regulation, self-renewal of stem cells, apoptosis and splicing regulation. Has a broad substrate specificity; phosphorylates BCL2L14, CDC25B, MAP3K5/ASK1 and ZNF622. Acts as an activator of apoptosis by phosphorylating and activating MAP3K5/ASK1. Acts as a regulator of cell cycle, notably by mediating phosphorylation of CDC25B, promoting localization of CDC25B to the centrosome and the spindle poles during mitosis. Plays a key role in cell proliferation. Required for proliferation of embryonic and postnatal multipotent neural progenitors. Phosphorylates and inhibits BCL2L14. Also involved in the inhibition of spliceosome assembly during mitosis by phosphorylating ZNF622, thereby contributing to its redirection to the nucleus. May also play

a role in primitive hematopoiesis.

Application Notes

Titration of the Melk antibody may be required due to differences in protocols and secondary/substrate sensitivity.

Immunogen

This mouse Melk antibody was produced from a rabbit immunized with a KLH conjugated synthetic peptide between 381-415 amino acids from the Central region of mouse Melk.

Storage

Aliquot the Melk antibody and store frozen at -20oC or colder. Avoid repeated freeze-thaw cycles.