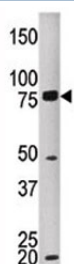


MELK Antibody (F50147)

Catalog No.	Formulation	Size
F50147-0.4ML	In 1X PBS, pH 7.4, with 0.09% sodium azide	0.4 ml
F50147-0.08ML	In 1X PBS, pH 7.4, with 0.09% sodium azide	0.08 ml

[Bulk quote request](#)

Availability	1-3 business days
Species Reactivity	Human
Format	Purified
Host	Rabbit
Clonality	Polyclonal (rabbit origin)
Isotype	Rabbit Ig
Purity	Purified
UniProt	Q14680
Applications	Western Blot : 1:1000
Limitations	This MELK antibody is available for research use only.



Western blot testing of MELK antibody and HEPG2 lysate. Predicted molecular weight ~ 73 kDa.

Description

MELK Contains 1 protein kinase domain that Belongs to the Ser/Thr protein kinase family. It phosphorylates ZNF622 and may contribute to its redirection to the nucleus. MELK may also be involved in the inhibition of spliceosome assembly during mitosis.

Application Notes

Titration of the MELK antibody may be required due to differences in protocols and secondary/substrate sensitivity.

Immunogen

A portion of amino acids 525-554 from the human protein was used as the immunogen for this MELK antibody.

Storage

Aliquot the MELK antibody and store frozen at -20oC or colder. Avoid repeated freeze-thaw cycles.