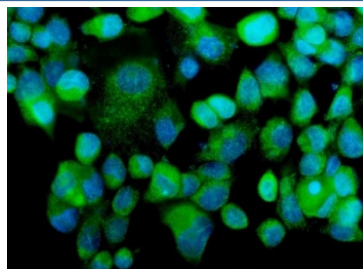


MEKK2 Antibody (RQ6104)

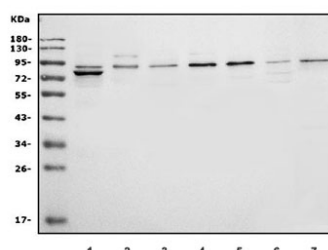
Catalog No.	Formulation	Size
RQ6104	0.5mg/ml if reconstituted with 0.2ml sterile DI water	100 ug

Bulk quote request

Availability	1-3 business days
Species Reactivity	Human, Rat
Format	Antigen affinity purified
Host	Rabbit
Clonality	Polyclonal (rabbit origin)
Isotype	Rabbit IgG
Purity	Affinity purified
Buffer	Lyophilized from 1X PBS with 2% Trehalose and 0.025% sodium azide
UniProt	Q9Y2U5
Applications	Western Blot : 1-2ug/ml Immunofluorescence : 5ug/ml Direct ELISA : 0.1-0.5ug/ml
Limitations	This MEKK2 antibody is available for research use only.



Immunofluorescent staining of FFPE human A431 cells with MEKK2 antibody (green) and DAPI nuclear stain (blue). HIER: steam section in pH6 citrate buffer for 20 min.



Western blot testing of human 1) HEK293, 2) HeLa, 3) K562, 4) HepG2, 5) MCF7, 6) Jurkat and 7) rat kidney lysate with MEKK2 antibody. Predicted molecular weight ~78 kDa.

Description

MAP3K2, mitogen-activated protein kinase kinase kinase 2, also known as MEKK2, belongs to the mitogen-activated protein kinase (MAPK) kinase kinase gene family, which is involved in regulating multiple MAPK signaling pathways. Endogenous MAP3K2 localized mainly to the cytosol of unstimulated HeLa cells and rat fibroblasts. The MAP3K2 gene is mapped to chromosome 2 by the International Radiation Hybrid Mapping Consortium. MAP3K2 is a major upstream activator of the JNK, MAPK cascade. MAP3K2 was identified as 1 of 6 kinases that regulate different steps of the caveolar cycle. Silencing of MAP3K2 strongly reduced kiss-and-run dynamics, leading to an accumulation of caveolar structures at the cell surface without affecting caveolae coat assembly or clustering.

Application Notes

Optimal dilution of the MEKK2 antibody should be determined by the researcher.

Immunogen

A human recombinant partial protein (amino acids M1-Q364) was used as the immunogen for the MEKK2 antibody.

Storage

After reconstitution, the MEKK2 antibody can be stored for up to one month at 4°C. For long-term, aliquot and store at -20°C. Avoid repeated freezing and thawing.