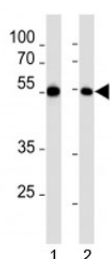


## MEF2C Antibody (F49560)

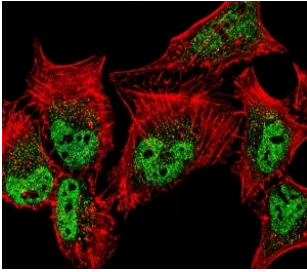
Catalog No.	Formulation	Size
F49560-0.4ML	In 1X PBS, pH 7.4, with 0.09% sodium azide	0.4 ml
F49560-0.08ML	In 1X PBS, pH 7.4, with 0.09% sodium azide	0.08 ml

[Bulk quote request](#)

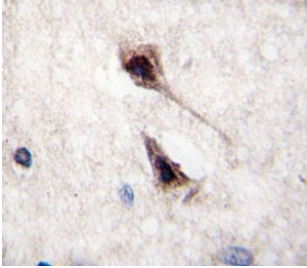
<b>Availability</b>	1-3 business days
<b>Species Reactivity</b>	Human
<b>Predicted Reactivity</b>	Pig
<b>Format</b>	Antigen affinity purified
<b>Host</b>	Rabbit
<b>Clonality</b>	Polyclonal (rabbit origin)
<b>Isotype</b>	Rabbit Ig
<b>Purity</b>	Antigen affinity
<b>UniProt</b>	Q06413
<b>Applications</b>	Western Blot : 1:1000 Immunofluorescence : 1:10-1:50 IHC (Paraffin) : 1:10-1:50
<b>Limitations</b>	This MEF2C antibody is available for research use only.



MEF2C antibody western blot analysis in 1) HL-60 and 2) K562 lysate.



Fluorescent confocal image of HeLa cell stained with MEF2C antibody. MEF2C immunoreactivity is localized to vesicles and nucleus significantly.



IHC analysis of FFPE human brain tissue stained with MEF2C antibody

## Description

MEF2C is a transcription activator which binds specifically to the MEF2 element present in the regulatory regions of many muscle-specific genes. This protein controls cardiac morphogenesis and myogenesis, and is also involved in vascular development. It may also be involved in neurogenesis and in the development of cortical architecture.

## Application Notes

Titration of the MEF2C antibody may be required due to differences in protocols and secondary/substrate sensitivity.

## Immunogen

A portion of amino acids 365-394 from the human protein was used as the immunogen for this MEF2C antibody.

## Storage

Aliquot the MEF2C antibody and store frozen at -20oC or colder. Avoid repeated freeze-thaw cycles.