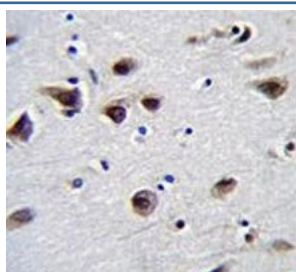


MeCP2 Antibody (F41828)

Catalog No.	Formulation	Size
F41828-0.4ML	In 1X PBS, pH 7.4, with 0.09% sodium azide	0.4 ml
F41828-0.08ML	In 1X PBS, pH 7.4, with 0.09% sodium azide	0.08 ml

[Bulk quote request](#)

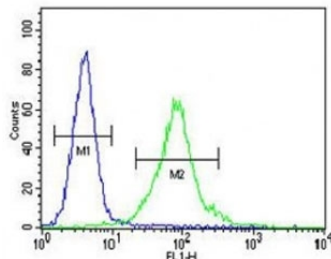
Availability	1-3 business days
Species Reactivity	Human
Predicted Reactivity	Mouse, Primate, Rat
Format	Antigen affinity purified
Host	Rabbit
Clonality	Polyclonal (rabbit origin)
Isotype	Rabbit Ig
Purity	Antigen affinity
UniProt	P51608
Applications	Western Blot : 1:1000 IHC (Paraffin) : 1:50-1:100 Flow Cytometry : 1:10-1:50
Limitations	This MeCP2 antibody is available for research use only.



MeCP2 antibody immunohistochemistry analysis in formalin fixed and paraffin embedded human brain tissue.

95
72
55
36
28
17

MeCP2 antibody western blot analysis in MDA-MB435 lysate. Observed molecular weight: ~55 kDa and ~75 kDa.



MeCP2 antibody flow cytometric analysis of MDA-MB435 cells (green) compared to a [negative control](#) (blue). FITC-conjugated goat-anti-rabbit secondary Ab was used for the analysis.

Description

MeCP2 is a chromosomal protein that binds to methylated DNA. It can bind specifically to a single methyl-CpG pair. It is not influenced by sequences flanking the methyl-CpGs. Mediates transcriptional repression through interaction with histone deacetylase and the corepressor SIN3A. Binds both 5-methylcytosine (5mC) and 5-hydroxymethylcytosine (5hmC)-containing DNA, with a preference for 5-methylcytosine (5mC). [UniProt]

Application Notes

Titration of the MeCP2 antibody may be required due to differences in protocols and secondary/substrate sensitivity.

Immunogen

A portion of amino acids 58-87 from the human protein was used as the immunogen for this MeCP2 antibody.

Storage

Aliquot the MeCP2 antibody and store frozen at -20oC or colder. Avoid repeated freeze-thaw cycles.