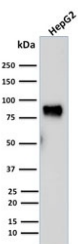


MDM2 Antibody [clone SMP14] (V7950)

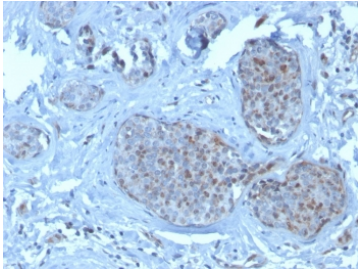
Catalog No.	Formulation	Size
V7950-100UG	0.2 mg/ml in 1X PBS with 0.1 mg/ml BSA (US sourced) and 0.05% sodium azide	100 ug
V7950-20UG	0.2 mg/ml in 1X PBS with 0.1 mg/ml BSA (US sourced) and 0.05% sodium azide	20 ug
V7950SAF-100UG	1 mg/ml in 1X PBS; BSA free, sodium azide free	100 ug

Bulk quote request

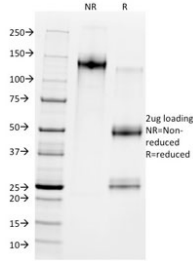
Availability	1-3 business days
Species Reactivity	Human, Mouse, Rat
Format	Purified
Host	Mouse
Clonality	Monoclonal (mouse origin)
Isotype	Mouse IgG1, kappa
Clone Name	SMP14
Purity	Protein G affinity chromatography
UniProt	Q00987
Localization	Nuclear
Applications	ELISA (order BSA-free Format For Coating) : Western Blot : 1-2ug/ml Immunohistochemistry (FFPE) : 1-2ug/ml
Limitations	This MDM2 antibody is available for research use only.



Western blot testing of human HepG2 cell lysate with MDM2 antibody (clone SMP14).
Predicted molecular weight: ~55 kDa but can be observed at up to ~90 kDa.



IHC staining of FFPE human breast cancer with MDM2 antibody (clone SMP14). HIER: boil tissue sections in pH 9 10mM Tris with 1mM EDTA for 20 min and allow to cool before testing.



SDS-PAGE analysis of purified, BSA-free MDM2 antibody (clone SMP14) as confirmation of integrity and purity.

Description

MDM2 is a nuclear phosphoprotein that binds and inhibits transactivation by tumor protein p53. It can promote tumor formation by targeting tumor suppressor proteins, such as p53, for proteasomal degradation. Overexpression of MDM2 can result in excessive inactivation of tumor protein p53, diminishing its tumor suppressor function. This protein also affects the cell cycle, apoptosis, and tumorigenesis through interactions with other proteins, including retinoblastoma 1 and ribosomal protein L5. Overexpression of MDM2 protein is detected in a variety of cancers.

Application Notes

Optimal dilution of the MDM2 antibody should be determined by the researcher.

Immunogen

Amino acids 154-167 were used as the immunogen for the MDM2 antibody.

Storage

Store the MDM2 antibody at 2-8°C (with azide) or aliquot and store at -20°C or colder (without azide).