

MCT10 Antibody / SLC16A10 (F54370)

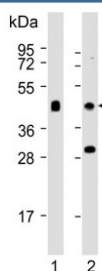
Catalog No.	Formulation	Size
F54370-0.4ML	In 1X PBS, pH 7.4, with 0.09% sodium azide	0.4 ml
F54370-0.08ML	In 1X PBS, pH 7.4, with 0.09% sodium azide	0.08 ml

Bulk quote request

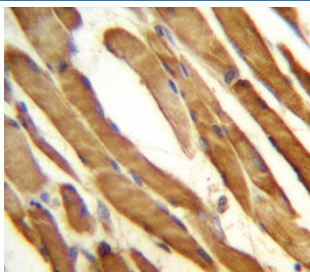
Availability	1-3 business days
Species Reactivity	Human
Format	Purified
Clonality	Polyclonal (rabbit origin)
Isotype	Rabbit IgG
Purity	Antigen affinity purified
UniProt	Q8TF71
Applications	Western Blot : 1:500-1:2000 Flow Cytometry : 1:25 (1x10e6 cells) Immunohistochemistry (FFPE) : 1:25
Limitations	This MCT10 antibody is available for research use only.



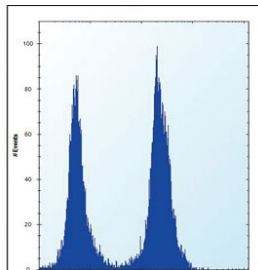
Western blot testing of human K562 cell lysate with MCT10 antibody. Predicted molecular weight ~55 kDa.



Western blot testing of human 1) skeletal muscle and 2) CCRF-CEM cell lysate with MCT10 antibody. Predicted molecular weight ~55 kDa.



IHC testing of FFPE human skeletal muscle tissue with MCT10 antibody. HIER: steam section in pH6 citrate buffer for 20 min and allow to cool prior to staining.



Flow cytometry testing of fixed and permeabilized human K562 cells with MCT10 antibody; Blue=isotype control, Green= MCT10 antibody.

Description

SLC16A10 is a member of a family of plasma membrane amino acid transporters that mediate the Na(+)-independent transport of aromatic amino acids across the plasma membrane.

Application Notes

The stated application concentrations are suggested starting points. Titration of the MCT10 antibody may be required due to differences in protocols and secondary/substrate sensitivity.

Immunogen

A portion of amino acids 301-329 from the human protein was used as the immunogen for the MCT10 antibody.

Storage

Aliquot the MCT10 antibody and store frozen at -20oC or colder. Avoid repeated freeze-thaw cycles.