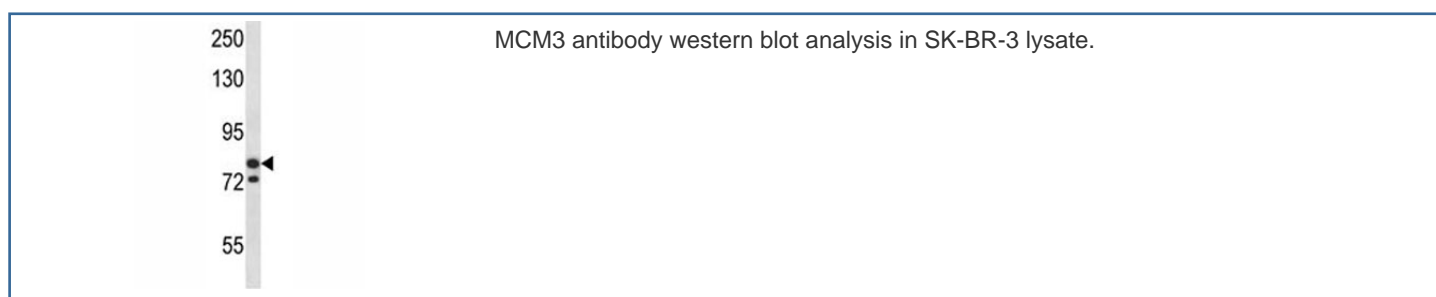


MCM3 Antibody (F43448)

Catalog No.	Formulation	Size
F43448-0.4ML	In 1X PBS, pH 7.4, with 0.09% sodium azide	0.4 ml
F43448-0.08ML	In 1X PBS, pH 7.4, with 0.09% sodium azide	0.08 ml

[Bulk quote request](#)

Availability	1-3 business days
Species Reactivity	Human
Predicted Reactivity	Mouse, Bovine
Format	Antigen affinity purified
Host	Rabbit
Clonality	Polyclonal (rabbit origin)
Isotype	Rabbit Ig
Purity	Antigen affinity
UniProt	P25205
Applications	Western Blot : 1:1000
Limitations	This MCM3 antibody is available for research use only.



Description

The protein encoded by this gene is one of the highly conserved mini-chromosome maintenance proteins (MCM) that are involved in the initiation of eukaryotic genome replication. The hexameric protein complex formed by MCM proteins is a key component of the pre-replication complex (pre_RC) and may be involved in the formation of replication forks and in the recruitment of other DNA replication related proteins. This protein is a subunit of the protein complex that consists of MCM2-7. It has been shown to interact directly with MCM5/CDC46. This protein also interacts with, and thus is acetylated

by MCM3AP, a chromatin-associated acetyltransferase. The acetylation of this protein inhibits the initiation of DNA replication and cell cycle progression. [provided by RefSeq].

Application Notes

Titration of the MCM3 antibody may be required due to differences in protocols and secondary/substrate sensitivity.

Immunogen

A portion of amino acids 36-64 from the human protein was used as the immunogen for this MCM3 antibody.

Storage

Aliquot the MCM3 antibody and store frozen at -20oC or colder. Avoid repeated freeze-thaw cycles.