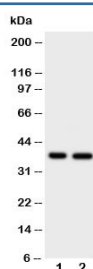


## MCL-1 Antibody (R30576)

Catalog No.	Formulation	Size
R30576	0.5mg/ml if reconstituted with 0.2ml sterile DI water	100 ug

**Bulk quote request**

<b>Availability</b>	1-3 business days
<b>Species Reactivity</b>	Human
<b>Format</b>	Antigen affinity purified
<b>Host</b>	Rabbit
<b>Clonality</b>	Polyclonal (rabbit origin)
<b>Isotype</b>	Rabbit IgG
<b>Purity</b>	Antigen affinity
<b>Buffer</b>	Lyophilized from 1X PBS with 2.5% BSA and 0.025% sodium azide/thimerosal
<b>UniProt</b>	Q07820
<b>Applications</b>	Western Blot : 0.5-1ug/ml
<b>Limitations</b>	This MCL-1 antibody is available for research use only.



Western blot testing of MCL-1 antibody and Lane 1: HeLa; 2: MCF-7 cell lysate.  
Predicted molecular weight ~37kDa.

## Description

BCL2L3, also known as Myeloid cell leukemia sequence 1, encodes an anti-apoptotic protein, which is a member of the Bcl-2 family. Alternative splicing results in multiple transcript variants. The longest gene product (isoform 1) enhances cell survival by inhibiting apoptosis while the alternatively spliced shorter gene products (isoform 2 and isoform 3) promote apoptosis and are death-inducing. Using the methods of somatic cell hybrid analysis and fluorescence in situ hybridization, the MCL-1 gene is mapped to human 1q21. MCL-1 is a critical and specific regulator essential for ensuring the homeostasis of early hematopoietic progenitors. Phosphorylation of MCL-1 directs its interaction with the tumor suppressor protein FBW7, which is the substrate-binding component of a ubiquitin ligase complex. The polyubiquitylation

of MCL-1 then targets it for proteasomal degradation. Degradation was blocked in patient-derived tumor cells that lacked FBW7 or had loss-of-function mutations in FBW7, conferring resistance to antitubulin agents and promoting chemotherapeutic-induced polyploidy.

## Application Notes

The stated application concentrations are suggested starting amounts. Titration of the MCL-1 antibody may be required due to differences in protocols and secondary/substrate sensitivity.

## Immunogen

Amino acids 303-325 (RDWLVKQRGWDGFVEFFHVEDLE-human) were used as the immunogen for this MCL-1 antibody.

## Storage

After reconstitution, the MCL-1 antibody can be stored for up to one month at 4°C. For long-term, aliquot and store at -20°C. Avoid repeated freezing and thawing.