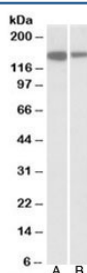


MCF2L Antibody (R35346)

Catalog No.	Formulation	Size
R35346-100UG	0.5 mg/ml in 1X TBS, pH7.3, with 0.5% BSA (US sourced) and 0.02% sodium azide	100 ug

[Bulk quote request](#)

Availability	1-3 business days
Species Reactivity	Human
Predicted Reactivity	Cow, Dog, Mouse, Rat
Format	Antigen affinity purified
Clonality	Polyclonal (goat origin)
Isotype	Goat Ig
Purity	Antigen affinity
Gene ID	23263
Applications	Western Blot : 1-3ug/ml ELISA (peptide) LOD : 1:128000
Limitations	This MCF2L antibody is available for research use only.



Western blot testing of Jurkat [A] and human thymus [B] lysates with MCF2L antibody at 1ug/ml. Predicted molecular weight: ~131kDa, observed here at ~150kDa.

Description

Additional name(s) for this target protein: MCF.2 cell line derived transforming sequence-like

Application Notes

Optimal dilution of the MCF2L antibody should be determined by the researcher.

Immunogen

Amino acids QLDNQATVQR were used as the immunogen for this MCF2L antibody.

Storage

Aliquot and store the MCF2L antibody at -20oC.