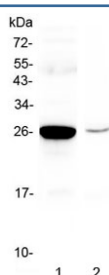


## Mbl2 Antibody / Mannose-binding lectin 2 (RQ4402)

Catalog No.	Formulation	Size
RQ4402	0.5mg/ml if reconstituted with 0.2ml sterile DI water	100 ug

**Bulk quote request**

<b>Availability</b>	1-3 business days
<b>Species Reactivity</b>	Mouse
<b>Format</b>	Antigen affinity purified
<b>Host</b>	Rabbit
<b>Clonality</b>	Polyclonal (rabbit origin)
<b>Isotype</b>	Rabbit IgG
<b>Purity</b>	Antigen affinity purified
<b>Buffer</b>	Lyophilized from 1X PBS with 2% Trehalose and 0.025% sodium azide
<b>UniProt</b>	P41317
<b>Applications</b>	Western Blot : 0.5-1ug/ml ELISA : 0.1-0.5ug/ml (Capture; recombinant mouse protein) (BSA-free format available)
<b>Limitations</b>	This Mbl2 antibody is available for research use only.



Western blot testing of mouse 1) liver and 2) HEPA1-6 lysate with Mbl2 antibody at 0.5ug/ml. Predicted molecular weight: ~26 kDa.

## Description

MBL2, also called mannose-binding lectin (protein C) 2, soluble or Mannose-binding lectin (MBL) is a lectin that is instrumental in innate immunity. MBL2 is mapped to chromosome 10q11.2-q21. It belongs to the class of collectins in the C-type lectin superfamily, whose function appears to be pattern recognition in the first line of defense in the pre-immune host. MBL2 recognizes carbohydrate patterns, found on the surface of a large number of pathogenic micro-organisms, including bacteria, viruses, protozoa and fungi. Binding MBL2 to a micro-organism results in activation of the lectin pathway of the complement system. Another important function of MBL2 is that this molecule binds senescent and

apoptotic cells and enhances engulfment of whole, intact apoptotic cells, as well as cell debris by phagocytes.

## Application Notes

Optimal dilution of the Mbl2 antibody should be determined by the researcher.

## Immunogen

A mouse partial recombinant protein corresponding to amino acids L39-D229 was used as the immunogen for the Mbl2 antibody.

## Storage

After reconstitution, the Mbl2 antibody can be stored for up to one month at 4°C. For long-term, aliquot and store at -20°C. Avoid repeated freezing and thawing.