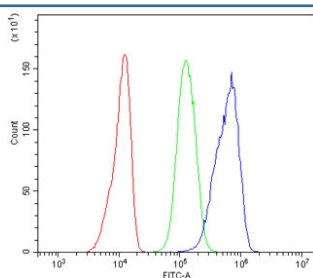


## MASP2 Antibody (RQ6058)

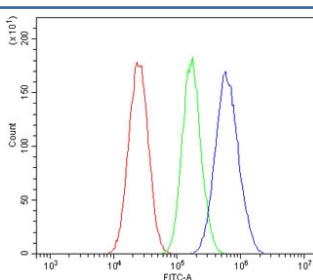
Catalog No.	Formulation	Size
RQ6058	0.5mg/ml if reconstituted with 0.2ml sterile DI water	100 ug

**Bulk quote request**

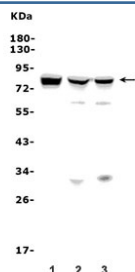
<b>Availability</b>	1-3 business days
<b>Species Reactivity</b>	Human
<b>Format</b>	Antigen affinity purified
<b>Host</b>	Rabbit
<b>Clonality</b>	Polyclonal (rabbit origin)
<b>Isotype</b>	Rabbit IgG
<b>Purity</b>	Affinity purified
<b>Buffer</b>	Lyophilized from 1X PBS with 2% Trehalose and 0.025% sodium azide
<b>UniProt</b>	O00187
<b>Applications</b>	Western Blot : 0.5-1ug/ml Flow Cytometry : 1-3ug/million cells
<b>Limitations</b>	This MASP2 antibody is available for research use only.



Flow cytometry testing of human A431 cells with MASP2 antibody at 1ug/million cells (blocked with goat sera); Red=cells alone, Green=isotype control, Blue= MASP2 antibody.



Flow cytometry testing of human HepG2 cells with MASP2 antibody at 1ug/million cells (blocked with goat sera); Red=cells alone, Green=isotype control, Blue= MASP2 antibody.



Western blot testing of human 1) HepG2, 2) HeLa and 3) Caco-2 lysate with MASP2 antibody. Predicted molecular weight ~76 kDa.

## Description

Mannan-binding lectin serine protease 2 is a protein that in humans is encoded by the MASP2 gene. This gene is mapped to 1p36.22. This gene encodes a member of the peptidase S1 family of serine proteases. The encoded preproprotein is proteolytically processed to generate A and B chains that heterodimerize to form the mature protease. This protease cleaves complement components C2 and C4 in order to generate C3 convertase in the lectin pathway of the complement system. The encoded protease also plays a role in the coagulation cascade through cleavage of prothrombin to form thrombin. Myocardial infarction and acute stroke patients exhibit reduced serum concentrations of the encoded protein. Alternative splicing results in multiple transcript variants, at least one of which encodes an isoform that is proteolytically processed.

## Application Notes

Optimal dilution of the MASP2 antibody should be determined by the researcher.

## Immunogen

Amino acids EAGQYGVYTKVINYPWIENIISDF from the human protein were used as the immunogen for the MASP2 antibody.

## Storage

After reconstitution, the MASP2 antibody can be stored for up to one month at 4°C. For long-term, aliquot and store at -20°C. Avoid repeated freezing and thawing.