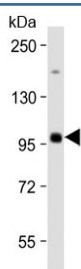


MAP4K1 Antibody (F54204)

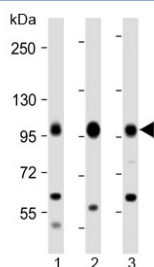
Catalog No.	Formulation	Size
F54204-0.2ML	In 1X PBS, pH 7.4, with 0.09% sodium azide	0.2 ml
F54204-0.05ML	In 1X PBS, pH 7.4, with 0.09% sodium azide	0.05 ml

[Bulk quote request](#)

Availability	1-3 business days
Species Reactivity	Human
Format	Antigen affinity purified
Clonality	Polyclonal
Isotype	Rabbit Ig
Purity	Protein A purified
UniProt	Q92918
Applications	Western Blot : 1:2000
Limitations	This MAP4K1 antibody is available for research use only.



Western blot testing of human Raji cell lysate with MAP4K1 antibody at 1:2000. Predicted molecular weight ~91 kDa.



Western blot testing of human 1) Daudi, 2) Raji and 3) Jurkat cell lysate with MAP4K1 antibody at 1:2000. Predicted molecular weight ~91 kDa.

Description

Serine/threonine-protein kinase, which may play a role in the response to environmental stress. Appears to act upstream of the JUN N-terminal pathway. May play a role in hematopoietic lineage decisions and growth regulation. Able to autophosphorylate.

Application Notes

The stated application concentrations are suggested starting points. Titration of the MAP4K1 antibody may be required due to differences in protocols and secondary/substrate sensitivity.

Immunogen

A human recombinant protein was used as the immunogen for the MAP4K1 antibody.

Storage

Aliquot the MAP4K1 antibody and store frozen at -20oC or colder. Avoid repeated freeze-thaw cycles.