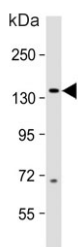


## MAP3K15 Antibody (F54647)

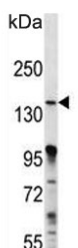
Catalog No.	Formulation	Size
F54647-0.4ML	In 1X PBS, pH 7.4, with 0.09% sodium azide	0.4 ml
F54647-0.08ML	In 1X PBS, pH 7.4, with 0.09% sodium azide	0.08 ml

[Bulk quote request](#)

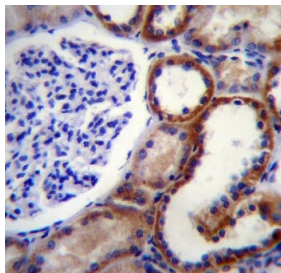
<b>Availability</b>	1-3 business days
<b>Species Reactivity</b>	Human, Mouse
<b>Format</b>	Purified
<b>Host</b>	Rabbit
<b>Clonality</b>	Polyclonal (rabbit origin)
<b>Isotype</b>	Rabbit Ig
<b>Purity</b>	Antigen affinity purified
<b>UniProt</b>	Q6ZN16
<b>Applications</b>	Flow Cytometry : 1:25 (1x10 <sup>6</sup> cells) Immunohistochemistry (FFPE) : 1:25 Western Blot : 1:500-1:2000
<b>Limitations</b>	This MAP3K15 antibody is available for research use only.



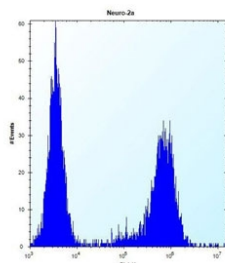
Western blot testing of human fetal brain lysate with MAP3K15 antibody. Predicted molecular weight ~147 kDa.



Western blot testing of mouse Neuro-2a cell lysate with MAP3K15 antibody. Predicted molecular weight ~147 kDa.



IHC testing of FFPE human kidney tissue with MAP3K15 antibody. HIER: steam section in pH6 citrate buffer for 20 min and allow to cool prior to staining.



Flow cytometry testing of mouse Neuro-2a cells with MAP3K15 antibody; Blue=isotype control, Green= MAP3K15 antibody.

## Description

The protein encoded by this gene is a member of the mitogen-activated protein kinase (MAPK) family. These family members function in a protein kinase signal transduction cascade, where an activated MAPK kinase kinase (MAP3K) phosphorylates and activates a specific MAPK kinase (MAP2K), which then activates a specific MAPK. This MAP3K protein plays an essential role in apoptotic cell death triggered by cellular stresses. [provided by RefSeq].

## Application Notes

The stated application concentrations are suggested starting points. Titration of the MAP3K15 antibody may be required due to differences in protocols and secondary/substrate sensitivity.

## Immunogen

A portion of amino acids 315-342 from the human protein was used as the immunogen for the MAP3K15 antibody.

## Storage

Aliquot the MAP3K15 antibody and store frozen at -20oC or colder. Avoid repeated freeze-thaw cycles.