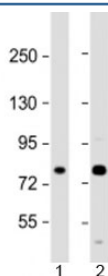


MAN1A2 Antibody / MAN1B (F53933)

| Catalog No. | Formulation | Size |
|---------------|--|---------|
| F53933-0.2ML | In 1X PBS, pH 7.4, with 0.09% sodium azide | 0.2 ml |
| F53933-0.05ML | In 1X PBS, pH 7.4, with 0.09% sodium azide | 0.05 ml |

[Bulk quote request](#)

| | |
|---------------------------|--|
| Availability | 1-3 business days |
| Species Reactivity | Human |
| Format | Antigen affinity purified |
| Host | Rabbit |
| Clonality | Polyclonal (rabbit origin) |
| Isotype | Rabbit Ig |
| Purity | Antigen affinity |
| UniProt | O60476 |
| Applications | Western Blot : 1:1000-2000 |
| Limitations | This MAN1A2 antibody is available for research use only. |



Western blot testing of human 1) A431 and 2) U-2OS cell lysate with MAN1A2 antibody at 1:2000. Predicted molecular weight: 73 kDa.

Description

Mannosidase alpha class 1A member 2 is involved in the maturation of Asn-linked oligosaccharides. Progressively trim alpha-1,2-linked mannose residues from Man(9)GlcNAc(2) to produce Man(5)GlcNAc(2).

Application Notes

Titration of the MAN1A2 antibody may be required due to differences in protocols and secondary/substrate sensitivity.

Immunogen

A portion of amino acids 342-373 from the human protein was used as the immunogen for the MAN1A2 antibody.

Storage

Aliquot the MAN1A2 antibody and store frozen at -20oC or colder. Avoid repeated freeze-thaw cycles.