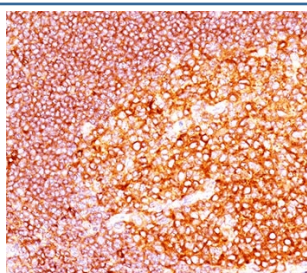


MALT1 Antibody [clone MT1/410] (V2307)

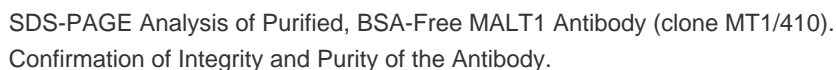
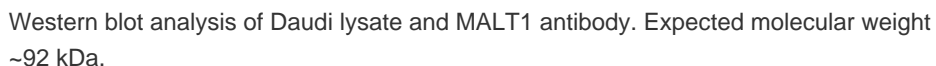
Catalog No.	Formulation	Size
V2307-100UG	0.2 mg/ml in 1X PBS with 0.1 mg/ml BSA (US sourced) and 0.05% sodium azide	100 ug
V2307-20UG	0.2 mg/ml in 1X PBS with 0.1 mg/ml BSA (US sourced) and 0.05% sodium azide	20 ug
V2307SAF-100UG	1 mg/ml in 1X PBS; BSA free, sodium azide free	100 ug
V2307IHC-7ML	Prediluted in 1X PBS with 0.1 mg/ml BSA (US sourced) and 0.05% sodium azide; *For IHC use only*	7 ml

[Bulk quote request](#)

Species Reactivity	Human
Format	Purified
Host	Mouse
Clonality	Monoclonal (mouse origin)
Isotype	Mouse IgG1, kappa
Clone Name	MT1/410
Purity	Protein G purified monoclonal antibody
Buffer	1X PBS, pH 7.4
Gene ID	10892
Localization	Cytoplasmic
Applications	Western Blot : 1-2ug/ml Immunohistochemistry (FFPE) : 1-2ug/ml for 30 min at RT (1) (2)
Limitations	This MALT1 antibody is available for research use only.



IHC staining of FFPE human tonsil tissue with MALT1 antibody (clone MT1/410).



References (1)

