

## Major Vault Protein Antibody [clone 1032] (V3043)

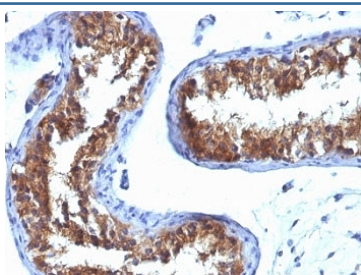
Catalog No.	Formulation	Size
V3043-100UG	0.2 mg/ml in 1X PBS with 0.1 mg/ml BSA (US sourced) and 0.05% sodium azide	100 ug
V3043-20UG	0.2 mg/ml in 1X PBS with 0.1 mg/ml BSA (US sourced) and 0.05% sodium azide	20 ug
V3043SAF-100UG	1 mg/ml in 1X PBS; BSA free, sodium azide free	100 ug
V3043IHC-7ML	Prediluted in 1X PBS with 0.1 mg/ml BSA (US sourced) and 0.05% sodium azide; *For IHC use only*	7 ml



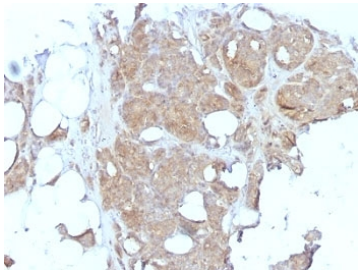
Citations (2)

[Bulk quote request](#)

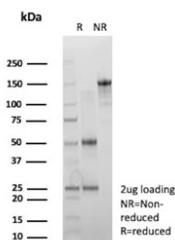
Availability	1-3 business days
Species Reactivity	Human
Format	Purified
Host	Mouse
Clonality	Monoclonal (mouse origin)
Isotype	Mouse IgG1, kappa
Clone Name	1032
Purity	Protein G affinity chromatography
UniProt	Q14764
Localization	Cytoplasmic, nuclear
Applications	Immunohistochemistry (FFPE) : 1-2ug/ml for 30 min at RT
Limitations	This Major Vault Protein antibody is available for research use only.



IHC analysis of formalin-fixed, paraffin-embedded human testicular carcinoma stained with Major Vault Protein antibody (clone 1032).



IHC analysis of formalin-fixed, paraffin-embedded human breast carcinoma stained with Major Vault Protein antibody (clone 1032).



SDS-PAGE analysis of purified, BSA-free Major Vault Protein antibody (clone 1032) as confirmation of integrity and purity.

## Description

MVP is required for normal vault structure. Vaults are multi-subunit structures that may act as scaffolds for proteins involved in signal transduction. Vaults may also play a role in nucleo-cytoplasmic transport. Down-regulates INFG-mediated STAT1 signaling and subsequent activation of JAK. Down-regulates SRC activity and signaling through MAP kinases.

## Application Notes

Optimal dilution of the Major Vault Protein antibody should be determined by the researcher.

1. Staining of formalin-fixed tissues requires boiling tissue sections in 10mM Tris with 1mM EDTA, pH 9, for 10-20 min followed by cooling at RT for 20 min.
2. The prediluted format is supplied in a dropper bottle and is optimized for use in IHC. After epitope retrieval step (if required), drip mAb solution onto the tissue section and incubate at RT for 30 min.

## Immunogen

Proteins precipitated from human breast cancer MCF-7 cells were used as the immunogen for the Major Vault Protein antibody.

## Storage

Store the Major Vault Protein antibody at 2-8°C (with azide) or aliquot and store at -20°C or colder (without azide).

