

Major Vault Protein Antibody [clone 1014] (V3042)

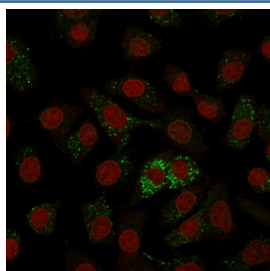
Catalog No.	Formulation	Size
V3042-100UG	0.2 mg/ml in 1X PBS with 0.1 mg/ml BSA (US sourced) and 0.05% sodium azide	100 ug
V3042-20UG	0.2 mg/ml in 1X PBS with 0.1 mg/ml BSA (US sourced) and 0.05% sodium azide	20 ug
V3042SAF-100UG	1 mg/ml in 1X PBS; BSA free, sodium azide free	100 ug



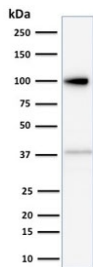
Citations (5)

[Bulk quote request](#)

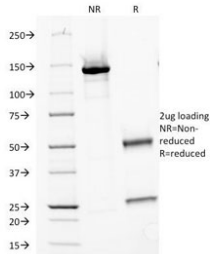
Availability	1-3 business days
Species Reactivity	Human
Format	Purified
Host	Mouse
Clonality	Monoclonal (mouse origin)
Isotype	Mouse IgG1, kappa
Clone Name	1014
Purity	Protein G affinity chromatography
UniProt	Q14764
Localization	Cytoplasmic, nuclear
Applications	Western Blot : 1-2ug/ml Immunofluorescence : 1-2ug/ml
Limitations	This Major Vault Protein antibody is available for research use only.



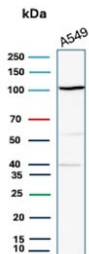
Immunofluorescent staining of human A549 cells with Major Vault Protein antibody (green, clone 1014) and Reddot nuclear stain (red).



Western blot testing of HeLa cell lysate with Major Vault Protein antibody (clone 1014).
Observed molecular weight: 104~110 kDa.



SDS-PAGE Analysis of Purified, BSA-Free Major Vault Protein Antibody (clone 1014).
Confirmation of Integrity and Purity of the Antibody.



Western blot testing of A549 cell lysate with Major Vault Protein antibody (clone 1014).
Observed molecular weight: 104~110 kDa.

Description

Recognizes a protein of 104kDa-110kDa, characterized as major vault protein (MVP). Vaults are large ribonucleoprotein particles (RNPs) present in all eukaryotic cells. They have a complex morphology, including several small molecules of RNA, but a single protein species. The MVP accounts for >70% of their mass. Their shape is reminiscent of the nucleopore central plug. Treatment of cells with estradiol increases the amount of MVP in nuclear extract. The hormone-dependent interaction of vaults with ER is prevented in vitro by sodium molybdate. Antibodies to estrogen, progesterone and glucocorticoid receptors are able to co-immunoprecipitate the MVP. MVP is overexpressed in many neoplastic tissues and cell lines. Expression of MVP predicts a poor response to chemotherapy.

Application Notes

Optimal dilution of the Major Vault Protein antibody should be determined by the researcher.

Immunogen

Proteins precipitated from human breast cancer MCF-7 cells were used as the immunogen for the Major Vault Protein antibody.

Storage

Store the Major Vault Protein antibody at 2-8°C (with azide) or aliquot and store at -20°C or colder (without azide).

