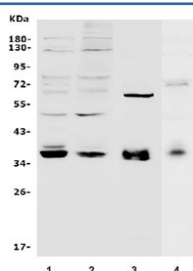


MAFA Antibody (R32282)

Catalog No.	Formulation	Size
R32282	0.5mg/ml if reconstituted with 0.2ml sterile DI water	100 ug

Bulk quote request

Availability	1-3 business days
Species Reactivity	Human, Rat
Format	Antigen affinity purified
Host	Rabbit
Clonality	Polyclonal (rabbit origin)
Isotype	Rabbit IgG
Purity	Antigen affinity
Buffer	Lyophilized from 1X PBS with 2.5% BSA and 0.025% sodium azide
UniProt	Q8NHW3
Applications	Western Blot : 0.1-0.5ug/ml
Limitations	This MAFA antibody is available for research use only.



Western blot testing of human 1) HEK293, 2) K562, 3) 22RV1 and 4) rat PC-12 lysate with MAFA antibody. Predicted molecular weight ~37 kDa.

Description

MAFA is a transcription factor that binds RIPE3b, a conserved enhancer element that regulates pancreatic beta cell-specific expression of the insulin gene. MAFA plays a key role in coordinating and controlling the level of insulin gene expression in islet beta cells. It is located in 8q24.3. The intracellular domain of MAFA contains a single immunoreceptor tyrosine-based inhibitory motif (ITIM), which classifies MAFA as a member of an inhibitory receptor superfamily. The inhibitory capacity of MAFA is best defined in mast cells, where MAFA keeps in check the antigen-induced (i.e. Fc epsilon RI-induced) secretion of inflammatory mediators.

Application Notes

Optimal dilution of the MAFA antibody should be determined by the researcher.

Immunogen

Amino acids EDAVEALIGSGHHGAHHGAHHPAAAAAYEAFR of human MAFA were used as the immunogen for the MAFA antibody.

Storage

After reconstitution, the MAFA antibody can be stored for up to one month at 4oC. For long-term, aliquot and store at -20oC. Avoid repeated freezing and thawing.