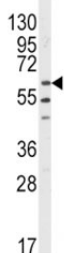


## LYN Antibody (F50712)

Catalog No.	Formulation	Size
F50712-0.4ML	In 1X PBS, pH 7.4, with 0.09% sodium azide	0.4 ml
F50712-0.08ML	In 1X PBS, pH 7.4, with 0.09% sodium azide	0.08 ml

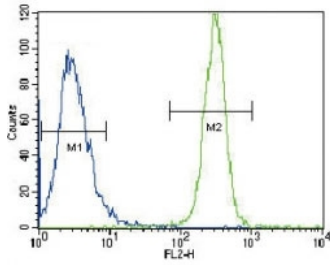
[Bulk quote request](#)

<b>Availability</b>	1-3 business days
<b>Species Reactivity</b>	Human
<b>Format</b>	Antigen affinity purified
<b>Host</b>	Rabbit
<b>Clonality</b>	Polyclonal (rabbit origin)
<b>Isotype</b>	Rabbit Ig
<b>Purity</b>	Antigen affinity
<b>UniProt</b>	P07948
<b>Localization</b>	Cytoplasmic, nuclear, cell membrane
<b>Applications</b>	Western Blot : 1:1000 Flow Cytometry : 1:10-1:50 IHC (Paraffin) : 1:50-1:100
<b>Limitations</b>	This LYN antibody is available for research use only.

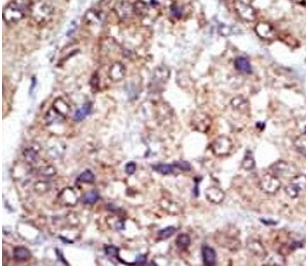


130  
95  
72  
55  
36  
28  
17

Western blot analysis of LYN antibody and HL-60 lysate. Predicted molecular weight ~58 kDa.



LYN antibody flow cytometric analysis of HeLa cells (green) compared to a negative control (blue). FITC-conjugated goat-anti-rabbit secondary Ab was used for the analysis.



IHC analysis of FFPE human hepatocarcinoma tissue stained with the LYN antibody

## Description

Lyn is a protein tyrosine kinase which is important in cellular signaling. It contains an SH2 and SH3 domain and has been found to be cleaved after activation of caspases in apoptosis.

## Application Notes

Titration of the LYN antibody may be required due to differences in protocols and secondary/substrate sensitivity.

## Immunogen

A portion of amino acids 32-62 from the human protein was used as the immunogen for this LYN antibody.

## Storage

Aliquot the LYN antibody and store frozen at -20oC or colder. Avoid repeated freeze-thaw cycles.