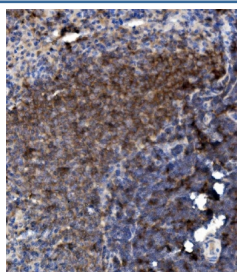


Ly6c Antibody (RQ5893)

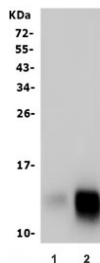
Catalog No.	Formulation	Size
RQ5893	0.5mg/ml if reconstituted with 0.2ml sterile DI water	100 ug

Bulk quote request

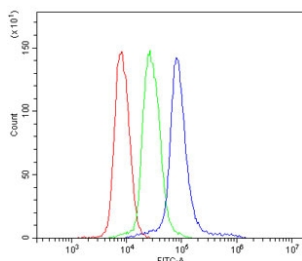
Availability	1-3 business days
Species Reactivity	Mouse, Rat
Format	Antigen affinity purified
Host	Rabbit
Clonality	Polyclonal (rabbit origin)
Isotype	Rabbit IgG
Purity	Affinity purified
Buffer	Lyophilized from 1X PBS with 2% Trehalose and 0.025% sodium azide
UniProt	P0CW02
Applications	Western Blot : 0.5-1ug/ml Immunohistochemistry : 1-2ug/ml Flow Cytometry : 1-3ug/million cells Direct ELISA : 0.1-0.5ug/ml
Limitations	This Ly6c antibody is available for research use only.



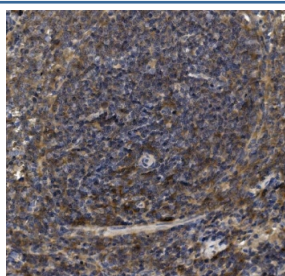
IHC staining of FFPE rat spleen with Ly6c antibody. HIER: boil tissue sections in pH8 EDTA for 20 min and allow to cool before testing.



Western blot testing of mouse 1) RAW264.7 and 2) ANA-1 cell lysate with Ly6c antibody. Predicted molecular weight ~14 kDa.



Flow cytometry testing of mouse spleen cells with Ly6c antibody at 1ug/million cells (blocked with goat sera); Red=cells alone, Green=isotype control, Blue= Ly6c antibody.



IHC staining of FFPE mouse spleen with Ly6c antibody. HIER: boil tissue sections in pH8 EDTA for 20 min and allow to cool before testing.

Description

Ly6C is a murine cell-surface antigen expressed by plasma cells, subsets of myeloid cells and many T cells, including memory T cells.

Application Notes

Optimal dilution of the Ly6c antibody should be determined by the researcher.

Immunogen

Recombinant mouse protein (amino acids L27-G109) was used as the immunogen for the Ly6c antibody.

Storage

After reconstitution, the Ly6c antibody can be stored for up to one month at 4oC. For long-term, aliquot and store at -20oC. Avoid repeated freezing and thawing.