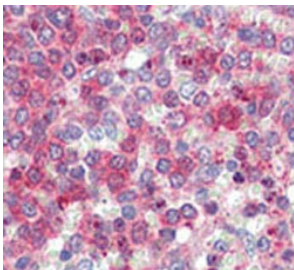


## LXN Antibody / Latexin (F54377)

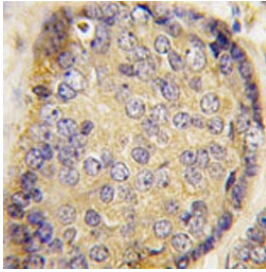
Catalog No.	Formulation	Size
F54377-0.4ML	In 1X PBS, pH 7.4, with 0.09% sodium azide	0.4 ml
F54377-0.08ML	In 1X PBS, pH 7.4, with 0.09% sodium azide	0.08 ml

[Bulk quote request](#)

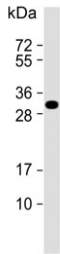
<b>Availability</b>	1-3 business days
<b>Species Reactivity</b>	Human
<b>Format</b>	Purified
<b>Host</b>	Rabbit
<b>Clonality</b>	Polyclonal (rabbit origin)
<b>Isotype</b>	Rabbit Ig
<b>Purity</b>	Antigen affinity purified
<b>UniProt</b>	Q9BS40
<b>Localization</b>	Cytoplasmic
<b>Applications</b>	Immunohistochemistry (FFPE) : 1:25 Flow Cytometry : 1:25 (1x10 <sup>6</sup> cells) Western Blot : 1:500-1:2000
<b>Limitations</b>	This LXN antibody is available for research use only.



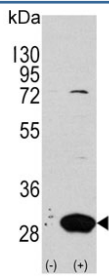
IHC testing of FFPE human spleen tissue with LXN antibody. HIER: steam section in pH6 citrate buffer for 20 min and allow to cool prior to staining.



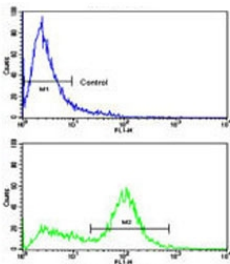
IHC testing of FFPE human prostate carcinoma tissue with LXN antibody. HIER: steam section in pH6 citrate buffer for 20 min and allow to cool prior to staining.



Western blot testing of human MCF7 cell lysate with LXN antibody. Predicted molecular weight ~26 kDa.



Western blot testing of 1) non-transfected and 2) transfected 293 cell lysate with LXN antibody.



Flow cytometry testing of human WiDr cells with LXN antibody; Blue=isotype control, Green= LXN antibody.

## Description

Latexin possesses nearly irreversible, non-competitive and potent inhibition of zinc-dependent metalloproteinases CPA1, CPA2, and CPA4. It is expressed in a neuronal subset in the cerebral cortex and cells in other neural and non-neural tissues of rat. Latexin plays a role in regional specification and/or morphogenesis of the forebrain.

## Application Notes

The stated application concentrations are suggested starting points. Titration of the LXN antibody may be required due to differences in protocols and secondary/substrate sensitivity.

## Immunogen

A portion of amino acids 78-107 from the human protein was used as the immunogen for the LXN antibody.

## Storage

Aliquot the LXN antibody and store frozen at -20°C or colder. Avoid repeated freeze-thaw cycles.

