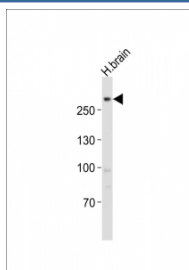


LRRK2 Antibody (F53185)

Catalog No.	Formulation	Size
F53185-0.4ML	In 1X PBS, pH 7.4, with 0.09% sodium azide	0.4 ml
F53185-0.08ML	In 1X PBS, pH 7.4, with 0.09% sodium azide	0.08 ml

[Bulk quote request](#)

Availability	1-3 business days
Species Reactivity	Human
Format	Antigen affinity purified
Host	Rabbit
Clonality	Polyclonal (rabbit origin)
Isotype	Rabbit Ig
Purity	Antigen affinity
UniProt	Q5S007
Applications	Western Blot : 1:1000
Limitations	This LRRK2 antibody is available for research use only.



Western blot testing of LRRK2 antibody at 1:1000 dilution + human brain lysate

Description

Positively regulates autophagy through a calcium- dependent activation of the CaMKK/AMPK signaling pathway. The process involves activation of nicotinic acid adenine dinucleotide phosphate (NAADP) receptors, increase in lysosomal pH, and calcium release from lysosomes. Together with RAB29, plays a role in the retrograde trafficking pathway for recycling proteins, such as mannose 6 phosphate receptor (M6PR), between lysosomes and the Golgi apparatus in a retromer-dependent manner. Regulates neuronal process morphology in the intact central nervous system (CNS). Phosphorylates PRDX3. May also have GTPase activity. May play a role in the phosphorylation of proteins central to Parkinson disease.

Application Notes

Titration of the LRRK2 antibody may be required due to differences in protocols and secondary/substrate sensitivity.

Immunogen

This LRRK2 antibody was produced from a rabbit immunized with a KLH conjugated synthetic peptide between 2171-2207 amino acids from the C-terminal region of human LRRK2.

Storage

Aliquot the LRRK2 antibody and store frozen at -20oC or colder. Avoid repeated freeze-thaw cycles.