

LRRK2 Antibody (F50111)

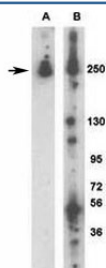
Catalog No.	Formulation	Size
F50111-0.4ML	In 1X PBS, pH 7.4, with 0.09% sodium azide	0.4 ml
F50111-0.08ML	In 1X PBS, pH 7.4, with 0.09% sodium azide	0.08 ml

[Bulk quote request](#)

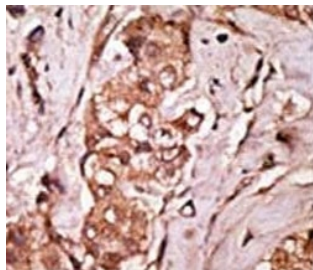
Availability	1-3 business days
Species Reactivity	Human
Format	Purified
Host	Rabbit
Clonality	Polyclonal (rabbit origin)
Isotype	Rabbit Ig
Purity	Purified
UniProt	Q5S007
Applications	Western Blot : 1:1000 IHC (Paraffin) : 1:50-1:100
Limitations	This LRRK2 antibody is available for research use only.



LRRK2 antibody detect over-expressed human LRRK2 protein.



Western blot analysis of LRRK2 antibody: (A) 293 cells transiently transfected with the PARK8/LRRK2 gene; (B) mouse brain.



IHC analysis of FFPE human breast carcinoma tissue stained with the LRRK2 antibody

Description

LRRK2 may be central to the pathogenesis of several major neurodegenerative disorders associated with parkinsonism. It belongs to the ROCO protein family and includes a protein kinase domain of the MAPKKK class and several other major functional domains.

Application Notes

Titration of the LRRK2 antibody may be required due to differences in protocols and secondary/substrate sensitivity.

Immunogen

A portion of amino acids 931-962 from the human protein was used as the immunogen for this LRRK2 antibody.

Storage

Aliquot the LRRK2 antibody and store frozen at -20oC or colder. Avoid repeated freeze-thaw cycles.