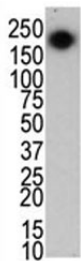


## LRRK2 Antibody [clone 133AT720] (F40409)

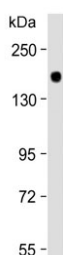
Catalog No.	Formulation	Size
F40409-0.4ML	In 1X PBS, pH 7.4, with 0.09% sodium azide	0.4 ml
F40409-0.08ML	In 1X PBS, pH 7.4, with 0.09% sodium azide	0.08 ml

[Bulk quote request](#)

<b>Availability</b>	1-3 business days
<b>Species Reactivity</b>	Human, Mouse
<b>Format</b>	Purified
<b>Host</b>	Mouse
<b>Clonality</b>	Monoclonal (mouse origin)
<b>Isotype</b>	Mouse IgG1
<b>Clone Name</b>	133AT720
<b>Purity</b>	Purified
<b>UniProt</b>	Q5S007
<b>Applications</b>	Western Blot : 1:100-1:500
<b>Limitations</b>	This LRRK2 antibody is available for research use only.



The LRRK2 antibody used in western blot to detect LRRK2/PARK8 in mouse brain cell lysate.



Western blot testing of mouse brain lysate with LRRK2 antibody.

## Description

This gene is a member of the leucine-rich repeat kinase family and encodes a protein with an ankryin repeat region, a leucine-rich repeat (LRR) domain, a kinase domain, a DFG-like motif, a RAS domain, a GTPase domain, a MLK-like domain, and a WD40 domain. The protein is present largely in the cytoplasm but also associates with the mitochondrial outer membrane. Mutations in this gene have been associated with Parkinson disease-8.

## Application Notes

Titration of the LRRK2 antibody may be required due to differences in protocols and secondary/substrate sensitivity.

## Immunogen

This LRRK2 antibody was raised in mice using purified His-tagged recombinant protein comprised of the C-terminal 261 residues of LRRK2.

## Storage

Aliquot the LRRK2 antibody and store frozen at -20oC or colder. Avoid repeated freeze-thaw cycles.