

LRRC45 Antibody (F54596)

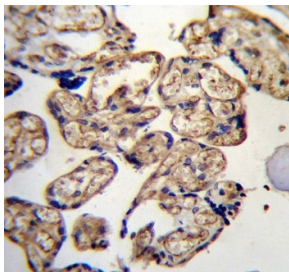
| Catalog No. | Formulation | Size |
|---------------|--|---------|
| F54596-0.4ML | In 1X PBS, pH 7.4, with 0.09% sodium azide | 0.4 ml |
| F54596-0.08ML | In 1X PBS, pH 7.4, with 0.09% sodium azide | 0.08 ml |

[Bulk quote request](#)

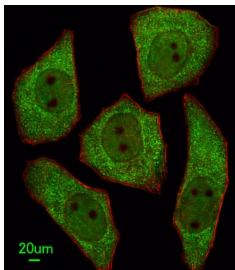
| | |
|---------------------------|---|
| Availability | 1-3 business days |
| Species Reactivity | Human |
| Format | Purified |
| Clonality | Polyclonal (rabbit origin) |
| Isotype | Rabbit Ig |
| Purity | Antigen affinity purified |
| UniProt | Q96CN5 |
| Localization | Cytoplasmic, nuclear |
| Applications | Western Blot : 1:500-1:2000 Immunofluorescence : 1:25 Immunohistochemistry (FFPE) : 1:25 Flow Cytometry : 1:25 (1x10 ⁶ cells) |
| Limitations | This LRRC45 antibody is available for research use only. |

kDa
 250-
 130-
 100-
 70-
 55-
 35-

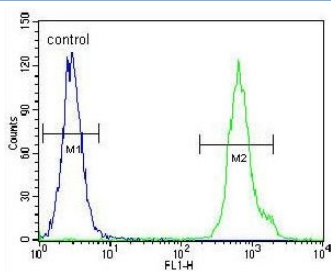
Western blot testing of human blood plasma lysate with LRRC45 antibody. Predicted molecular weight ~76 kDa.



IHC testing of FFPE human placental tissue with LRRC45 antibody. HIER: steam section in pH6 citrate buffer for 20 min and allow to cool prior to staining.



Immunofluorescent staining of human U251 cells with LRRC45 antibody (green) and anti-Actin (red).



Flow cytometry testing of human HeLa cells with LRRC45 antibody; Blue=isotype control, Green= LRRC45 antibody.

Description

Component of the proteinaceous fiber-like linker between two centrioles, required for centrosome cohesion. [UniProt]

Application Notes

The stated application concentrations are suggested starting points. Titration of the LRRC45 antibody may be required due to differences in protocols and secondary/substrate sensitivity.

Immunogen

A portion of amino acids 615-643 from the human protein was used as the immunogen for the LRRC45 antibody.

Storage

Aliquot the LRRC45 antibody and store frozen at -20oC or colder. Avoid repeated freeze-thaw cycles.