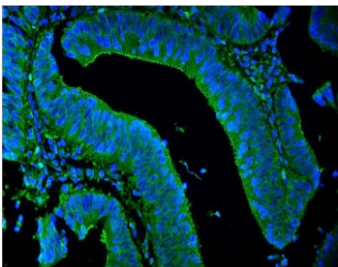


## LPP Antibody (RQ5738)

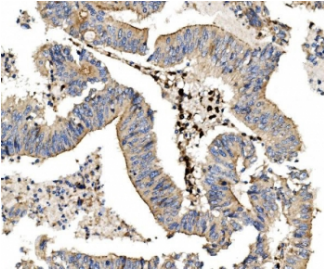
Catalog No.	Formulation	Size
RQ5738	0.5mg/ml if reconstituted with 0.2ml sterile DI water	100 ug

### Bulk quote request

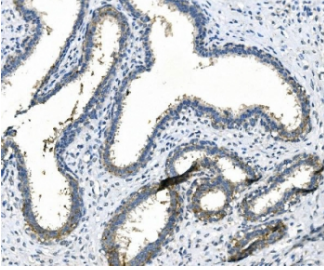
<b>Availability</b>	1-3 business days
<b>Species Reactivity</b>	Human, Mouse, Rat
<b>Format</b>	Antigen affinity purified
<b>Host</b>	Rabbit
<b>Clonality</b>	Polyclonal (rabbit origin)
<b>Isotype</b>	Rabbit IgG
<b>Purity</b>	Affinity purified
<b>Buffer</b>	Lyophilized from 1X PBS with 2% Trehalose and 0.025% sodium azide
<b>UniProt</b>	Q93052
<b>Localization</b>	Nuclear, cytoplasmic, plasma membrane
<b>Applications</b>	Western Blot : 0.5-1ug/ml Immunohistochemistry : 1-2ug/ml Immunofluorescence : 2-4ug/ml
<b>Limitations</b>	This LPP antibody is available for research use only.



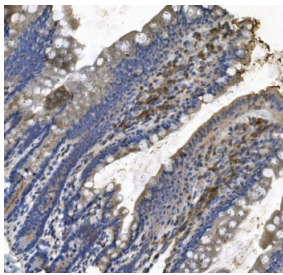
Immunofluorescent staining of FFPE human intestinal cancer with LPP antibody (green) and DAPI nuclear stain (blue). HIER: steam section in pH8 EDTA for 20 min.



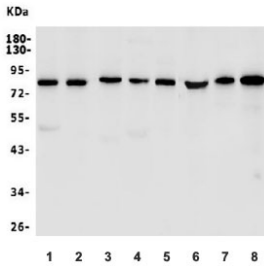
IHC staining of FFPE human rectal cancer with LPP antibody. HIER: boil tissue sections in pH8 EDTA for 20 min and allow to cool before testing.



IHC staining of FFPE human breast cancer with LPP antibody. HIER: boil tissue sections in pH8 EDTA for 20 min and allow to cool before testing.



IHC staining of FFPE rat intestine with LPP antibody. HIER: boil tissue sections in pH8 EDTA for 20 min and allow to cool before testing.



Western blot testing of human 1) A549, 2) HepG2, 3) HeLa, 4) MDA-MB-453, 5) monkey COS-7, 6) rat ovary, 7) rat PC-12 and 8) mouse ovary lysate with LPP antibody. Predicted molecular weight: ~66 kDa but is routinely observed at 80~85 kDa.

## Description

LPP (Lim Domain-Containing Preferred Translocation Partner in Lipoma), is a protein that in humans is encoded by the LPP gene. Petit et al. (1996) commented that the LPP-encoded protein should be classified as a novel member of the group 3 proteins of the LIM protein gene family. By partial cDNA cloning, Petit et al. (1996) established features of the genetic organization of LPP. The gene was found to span a genomic region of over 400 kb. By FISH and Southern blot analyses, Daheron et al. (2001) identified a rearrangement in the mixed lineage leukemia gene due to a novel t(3;11)(q28;q23) translocation in a patient who developed acute myeloid leukemia of the M5 type 3 years after treatment for a follicular lymphoma.

## Application Notes

Optimal dilution of the LPP antibody should be determined by the researcher.

## Immunogen

Amino acids KTCNSARIRVLTAKASTDL from the human protein were used as the immunogen for the LPP antibody.

## Storage

After reconstitution, the LPP antibody can be stored for up to one month at 4°C. For long-term, aliquot and store at -20°C. Avoid repeated freezing and thawing.