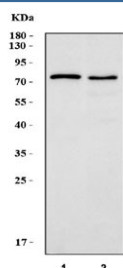


## LPP Antibody (R31150)

Catalog No.	Formulation	Size
R31150	0.5mg/ml if reconstituted with 0.2ml sterile DI water	100 ug

**Bulk quote request**

<b>Availability</b>	1-3 business days
<b>Species Reactivity</b>	Human
<b>Format</b>	Antigen affinity purified
<b>Host</b>	Rabbit
<b>Clonality</b>	Polyclonal (rabbit origin)
<b>Isotype</b>	Rabbit IgG
<b>Purity</b>	Antigen affinity
<b>Buffer</b>	Lyophilized from 1X PBS with 2% Trehalose
<b>UniProt</b>	Q93052
<b>Applications</b>	Western Blot : 0.5-1ug/ml
<b>Limitations</b>	This LPP antibody is available for research use only.



Western blot testing of human 1) A549 and 2) HepG2 cell lysate with LPP antibody.  
Predicted molecular weight: ~66 kDa but is routinely observed at 80~85 kDa.

## Description

Lim Domain-Containing Preferred Translocation Partner in Lipoma is a protein that in humans is encoded by the LPP gene. Petit et al.(1996) commented that the LPP-encoded protein should be classified as a novel member of the group 3 proteins of the LIM protein gene family. By partial cDNA cloning, Petit et al.(1996) established features of the genetic organization of LPP. The gene was found to span a genomic region of over 400 kb. By FISH and Southern blot analyses, Daheron et al.(2001) identified a rearrangement in the mixed lineage leukemia gene due to a novel t(3;11)(q28;q23) translocation in a patient who developed acute myeloid leukemia of the M5 type 3 years after treatment for a follicular lymphoma.

## Application Notes

The stated application concentrations are suggested starting amounts. Titration of the LPP antibody may be required due to differences in protocols and secondary/substrate sensitivity.

## Immunogen

An amino acid sequence from the middle region of human LPP (PNQGRIYEGYYAAGPGY) was used as the immunogen for this LPP antibody.

## Storage

After reconstitution, the LPP antibody can be stored for up to one month at 4°C. For long-term, aliquot and store at -20°C. Avoid repeated freezing and thawing.